

Thanet District Council

---

**Sustainability Appraisal  
of Thanet District  
Council's Core Strategy  
Development Plan  
Document**

---

Sustainability Appraisal  
Scoping Report

ISSUE

Thanet District Council

---

**Sustainability Appraisal  
of Thanet District  
Council's Core Strategy  
Development Plan  
Document**

---

Sustainability Appraisal  
Scoping Report

November 2007

**Ove Arup & Partners Ltd**  
The Arup Campus, Blythe Gate, Blythe Valley Park,  
Solihull, West Midlands. B90 8AE  
Tel +44 (0)121 213 3000 Fax +44 (0)121 213 3001  
[www.arup.com](http://www.arup.com)

This report takes into account the particular instructions and requirements of our client.

It is not intended for and should not be relied upon by any third party and no responsibility is undertaken to any third party

Job number 123968-00

Job title	Sustainability Appraisal of Thanet District Council's Core Strategy Development Plan Document	Job number	123968-00
-----------	---	------------	-----------

Document title	Sustainability Appraisal Scoping Report	File reference	
----------------	---	----------------	--

Document ref

Revision	Date	Filename			
Draft 1	29/10/07	Description	First draft		
			Prepared by	Checked by	Approved by
		Name	Various	Peter Hulson / Ben Walmsley	Peter Braithwaite
		Signature			
Issue	29/11/07	Filename	Thanet CS SA Scoping.doc		
		Description	Issue		
			Prepared by	Checked by	Approved by
		Name	Various	Peter Hulson	Peter Braithwaite
		Signature			
		Filename			
		Description			
			Prepared by	Checked by	Approved by
		Name			
		Signature			
		Filename			
		Description			
			Prepared by	Checked by	Approved by
		Name			
		Signature			

Issue Document Verification with Document

## Contents

	Page	
1	Introduction	1
	1.1 Preamble	1
	1.2 Your Comments	1
2	Introduction and Context	2
	2.1 Thanet District Council's Local Development Framework (LDF)	2
	2.2 Sustainable Development and the LDF	2
	2.3 SA and SEA and Requirements for the Core Strategy	4
	2.4 SA Process	5
	2.5 Approach, Contents and Structure of the Scoping Report	7
3	Relevant Plans, Policies and Programmes	9
	3.1 Requirement and Scope	9
	3.2 Document Review for Thanet	9
4	Baseline Situation and Key Sustainability Issues	10
	4.1 Scope and Purpose of the Baseline and Key Issues	10
	4.2 Collating Baseline Information and Identifying Sustainability Issues for Thanet	10
	4.3 Baseline Situation in Thanet	11
	4.4 Key Sustainability Issues for Thanet	19
5	Sustainability Appraisal Framework	29
	5.1 Purpose and Overview	29
	5.2 Objectives and Decision Making Criteria (DMC)	29
	5.3 Indicators and Targets	37
	5.4 Matrices for Appraisal	37
6	Next Steps	39
	6.1 Overview	39
	6.2 Completing Stage A: Consulting on and amending the Scoping Report	39
	6.3 Stage B: Appraising the Effects of the Plan (Options, Preferred Options (Draft Policies) and Draft Plan)	39
	6.4 Stage C: Document the Appraisal Process and Preparing the SA Report	40
	6.5 Stage D: Consulting on the Draft Plan and the SA Report	40
	6.6 Stage E: Monitoring the Implementation of the Plan	41
7	Summary	43

## Appendices

### Appendix A

#### Review of Plans Policies and Programmes

### Appendix B

SA Objectives, Decision Making Criteria and Indicators

Appendix C

SA Matrices

**Appendix D**

Baseline Data

## Glossary of Terms

2004 Act	Planning and Compulsory Purchase Act 2004
AAP	Area Action Plan
DBERR	Department for Business, Enterprise and Regulatory Reform
DCLG	Department for Communities and Local Government
DMC	Decision Making Criteria
DPD	Development Plan Document
GIS	Geographical Information System
Interim Advice, 2005	Interim Advice Note on Frequently Asked Questions, OPDM 2004
LDD	Local Development Document
LDF	Local Development Framework
LDS	Local Development Scheme
ODPM Draft SA Guidance, 2005	Sustainability Appraisal of Regional Spatial Strategies and Local Development Documents, Guidance for Regional Planning Bodies and Local Planning Authorities, ODPM 2005
ODPM	Office of the Deputy Prime Minister
RSDF	Regional Sustainable Development Framework
RSS	Regional Spatial Strategy
SA	Sustainability Appraisal
SCI	Statement of Community Involvement
SEA	Strategic Environment Assessment
SEA Directive	European Directive 2001/42/EC
SEA Regulations	The Environmental Assessment of Plans and Programmes Regulations 2004 (SI2004 no. 1633)
SOA	Super Output Area
SPD	Supplementary Planning Document
TDC	Thanet District Council

# 1 Introduction

## 1.1 Preamble

This Scoping Report sets out the context for and approach to the Sustainability Appraisal (SA) of Thanet District Council's Core Strategy and provides a framework for appraising all Development Plan Documents (DPDs) and Supplementary Planning Documents (SPD) within Thanet's Local Development Framework (LDF). It includes:

- A review of international, national, regional, sub regional and Thanet-wide plans, policies and programmes;
- Identification of baseline information within the Thanet region of relevance to the SA;
- An SA Framework for Thanet, including SA Objectives, Decision Making Criteria (DMC), indicators and targets and Appraisal Matrices (which may be applied to all Thanet's DPDs / SPDs); and,
- Information on the next steps of the SA process.

The purpose of Sustainability Appraisal (SA) is to promote sustainable development through the better integration of sustainability considerations into the preparation and implementation of plans. In accordance with the Planning and Compulsory Purchase Act 2004<sup>1</sup>, it is now a mandatory requirement to undertake an SA (incorporating the provisions of the Strategic Environmental Assessment (SEA) Directive)<sup>2</sup> for all Development Plan Documents (DPDs) and Supplementary Planning Documents (SPDs). This is to enable planning authorities to fulfil the objective of promoting sustainable development in the preparation of planning documents.

It should be acknowledged that in the preparation of this SA Scoping Report, reference has been made to plans and policies formulated in advance of the statutory requirement for SA to be undertaken. As such, it is recognised that the inherent sustainability of some plans and programmes may not have been tested against a formal SA Framework.

It should be noted that it is not possible for this process to influence previously adopted Central Government policy, nor is it the intention of this report to do so.

## 1.2 Your Comments

This Scoping Report provides a focus for statutory consultation. Thanet District Council (TDC) would like to invite your comments on this report. Our contact details are:

By post	Telephone, e-mail and other services
Strategic Planning Thanet District Council PO Box 9 Cecil Street Margate CT9 1XZ	Telephone 01843 577591 e-mail local.plans@thanet.gov.uk  For telephone recording, transcription and translation services – please contact the numbers/e-mail above.

<sup>1</sup> The Planning and Compulsory Purchase Act: 2004

<sup>2</sup> European Directive 2001/42/EC on the assessment of the effects of certain plans and programmes on the environment (as enacted in the UK by The Environmental Assessment of Plans and Programmes Regulations 2004 (SI 2004 no.1633))

## 2 Introduction and Context

### 2.1 Thanet District Council's Local Development Framework (LDF)

The Planning and Compulsory Purchase Act 2004 ('the 2004 Act') makes important changes to the planning system, the most significant of which is a new development plan system that is less complex, more accessible and actively engages the community and stakeholders in the plan making process. The old system of Local Plans and Structure Plans are replaced with Local Development Frameworks (LDFs) and Regional Spatial Strategies (RSS). The South East Regional Assembly is responsible for preparing the RSS and the TDC is required to prepare an LDF for the District.

The LDF can be described as a portfolio or 'loose leaf' series of documents, known collectively as Local Development Documents (LDDs), which together provide the planning framework for development in the District over the next 15 to 20 years. There are a number of different types of documents that make up the LDF:

- **Development Plan Documents (DPDs)** – statutory plans subject to independent examination by a Planning Inspector. DPDs will replace existing local plan policies and proposals. DPDs may be in the form of a Core Strategy, Proposal Map(s), Site Specific Allocations of Land and Area Action Plans;
- **Supplementary Planning Documents (SPDs)** – provide further details on the policies and proposals and are not subject to examination. SPDs may be in the form of design guides, found in the DPDs;
- **Sustainability Appraisals (SA)** – carried out for all DPDs and SPDs. This report forms the first stage of the SA process, details of which are given in section 2.3
- **Statement of Community Involvement** – sets the District Council's arrangements for engaging with the general public, private sector businesses and services and other public services such as health and police authorities, in the planning process;
- **Annual Monitoring Report** – on the progress of plan preparation and implementation of policies and proposals; and,
- **Local Development Scheme** – sets out the programme of work and timescales for preparing the documents that make up the LDF.

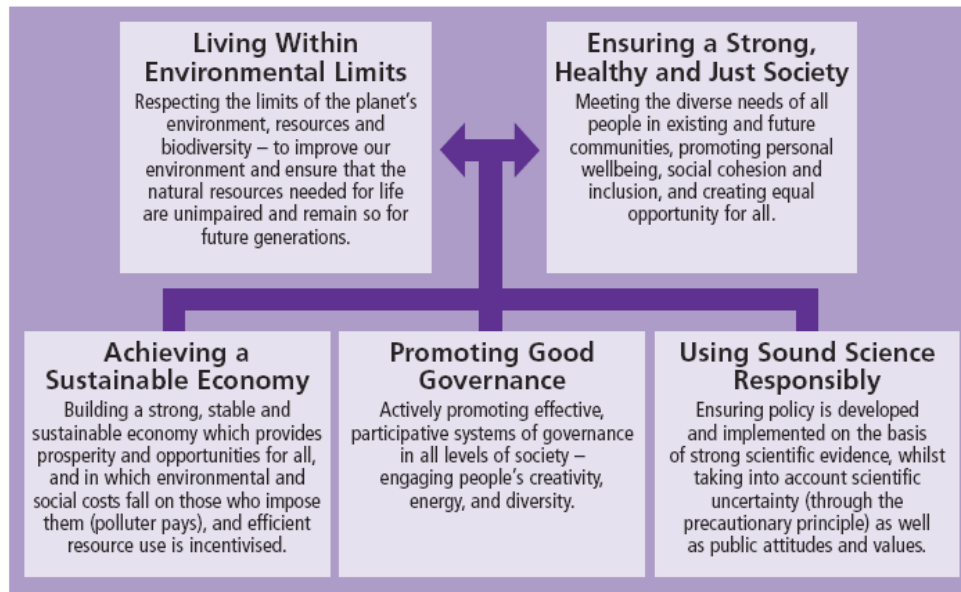
The Local Development Scheme (LDS) identifies the documents that will be prepared to comprise the LDF, the programme for delivering these documents, including those times for public participation, and the District Council's overall approach to preparing each LDD.

### 2.2 Sustainable Development and the LDF

Sustainable development is a key global and local issue. A commonly used definition of sustainable development is:

*'Development that meets the needs of the present without comprising the ability of future generations to meet their own needs'* Brundtland Commission, 1987.

The UK Government has updated its sustainable development strategy and published *Securing the Future*, March 2005. It sets out five key principles for sustainable development as illustrated in Figure 2.1.

**Figure 2.1 Guiding Principles in UK Strategy Securing the Future**

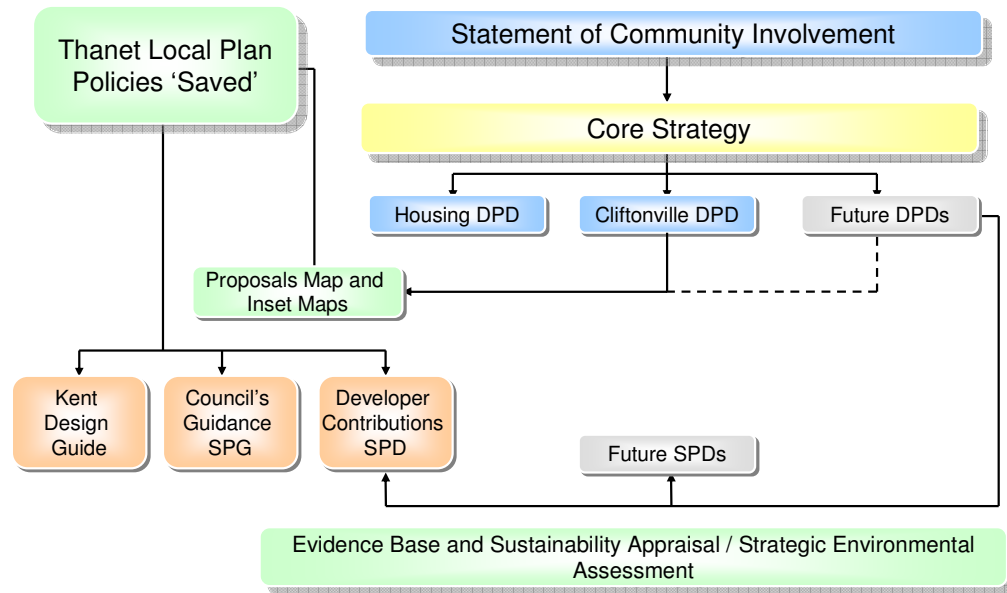
Source: *Securing the Future, 2005*

Spatial plans such as Thanet District Council's Core Strategy DPD can have a significant role in achieving the objectives of sustainable development. The 2004 Act requires planning bodies, in preparing plans, to contribute to the achievement of sustainable development.

Figure 2.2 shows the relationships between the LDD documents of Thanet District Council's LDF. This Scoping Report is intended to provide the baseline, key issues and set the framework for enabling the Core Strategy DPD, Housing DPD, Cliftonville DPD and Developer Contributions SPD to be delivered in a responsive and proactive manner to the sustainable development strategy.

To complement this Scoping Report, three bespoke Scoping Reports have been produced under separate cover for the Housing DPD, Cliftonville DPD and Developer Contributions SPD. These each provide additional specific baseline data, a planning policy review and additional objectives and indicators specifically relevant to these plan documents.

**Figure 2.2 Relationship between Thanet District Council Local Development Plan Documents**



**2.3 SA and SEA and Requirements for the Core Strategy**

**2.3.1 Sustainability Appraisal**

Sustainability Appraisal (SA) is an iterative process that identifies and reports on the likely significant effects of a plan. It achieves this by testing the performance of the plan against a series of environmental, social and economic objectives which define sustainable development. This process will identify the adverse sustainability issues that need to be mitigated and the opportunities for enhancement and subsequently provides the basis for improving the performance of plans. It is a systematic and transparent process for informing decision making.

In the context of the Core Strategy:

*'the purpose of SA to promote sustainable development through the better integration of sustainability considerations into the preparation and adoption of plans. It should be viewed as an integral part of good plan-making and should not be seen as a separate activity'.<sup>3</sup>*

SAs help planning authorities to fulfil the objective to promote sustainable development in the preparation of plans, and the 2004 Act makes SA mandatory for all DPDs and SPDs. In addition, SA helps planning authorities to deliver more effective DPDs and SPDs that can address the significant issues facing them

**2.3.2 Strategic Environmental Assessment**

The European Directive 2001/42/EC (SEA Directive) came into effect in the UK on the 21<sup>st</sup> July 2004 in the form of 'The Environmental Assessment of Plans and Programmes Regulations 2004 (SI2004/1633)'. These regulations require that a Strategic Environmental Assessment (SEA) is undertaken on a range of plans and programmes, including certain planning documents. The objective of the SEA Directive is:

*'to provide for a high level of protection of the environment and to contribute to the integration of environmental considerations into the preparation and adoption of plans ... with a view to promoting sustainable development' (Article 1, SEA Directive).*

<sup>3</sup> Sustainability Appraisal of Regional Spatial Strategies and Local Development Documents: ODPM, November 2005

The SEA Directive, Annex II suggests the significance of effects of a plan relates to the characteristics of the plan as well as its implications. Annex II defines the criteria for determining the likely significance of a plan in regard to the following characteristics:

- *The degree to which the plan or programme sets a framework for projects and other activities, either with regard to the location, nature, size and operating conditions or by allocating resources;*
- *The degree to which the plan or programme influences other plans and programmes including those in a hierarchy;*
- *The relevance of the plan or programme for the integration of environmental considerations in particular with a view to promoting sustainable development;*
- *Environmental problems relevant to the plan or programme; and,*
- *The relevance of the plan or programme for the implementation of Community legislation on the environment (e.g. plans and programmes linked to waste-management or water protection).*

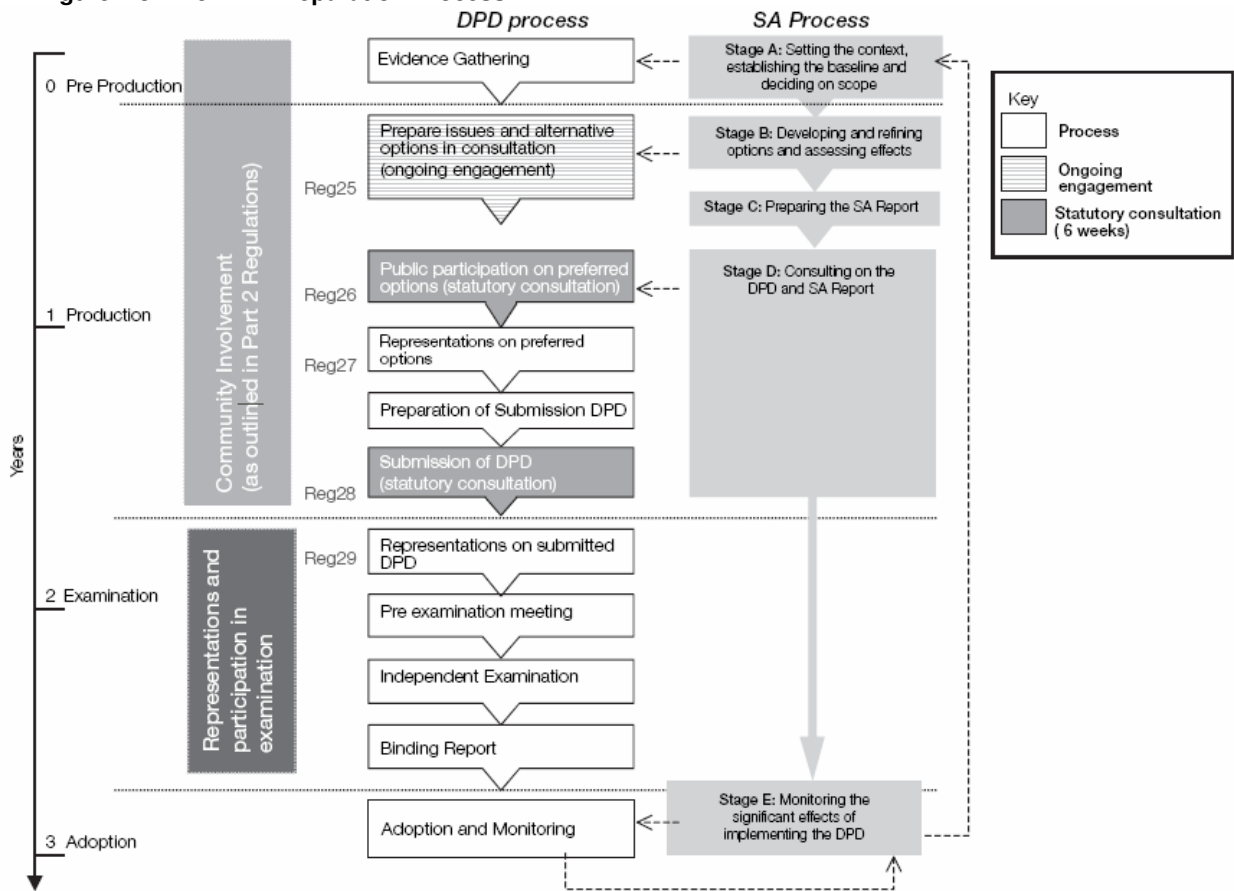
In relation to these characteristics it is clear the Core Strategy can have a significant impact and influence when considered in the context of the SEA Directive. Therefore, when preparing DPDs and SPDs planning authorities must conduct an environmental assessment in accordance to the SEA Directive.

## **2.4 SA Process**

### **2.4.1 A Combined Sustainability Appraisal and SEA Process**

Although the requirements to carry out SA and SEA are distinct, the ODPM (now Department for Communities and Local Government) proposed that both can be satisfied through a single appraisal process. They have produced guidance to ensure SAs meet the requirements of the SEA Directive whilst widening the Directive's approach to include economic and social issues as well as environmental. This process is outlined in the ODPM Sustainability Appraisal of Regional Spatial Strategies and Local Development Documents - Guidance for Regional Planning Bodies and Local Planning Authorities November 2005. The guidance proposes that where reference is made to SA (in the application to LDFs) it should be taken to include the requirements of the SEA Directive. The link between this combined process and its application to DPDs is illustrated in Figure 2.3.

**Figure 2.3: The DPD Preparation Process**



Source: ODPM SA Guidance November 2005

The Guidance emphasises the importance of the following key areas in conducting appraisals:

- *Collecting and presenting baseline information;*
- *Predicting the significant effects of the plan and addressing them during its preparation;*
- *Identifying reasonable plan options and their effects;*
- *Involving the public and authorities with social, environmental and economic responsibilities as part of the assessment process; and,*
- *Monitoring the actual effects of the plan during its implementation.*

**2.4.2 Key Stages of the SA Process**

The SA process, as defined in the ODPM SA Guidance 2005, must be applied to all DPDs and SPDs. This process is outlined below:

- Stage A: Set the context and objectives, establish the baseline and decide on the scope (produce Scoping Report);
- Stage B: Appraising the effects of the plan (options, preferred options (draft policies) and draft plan);
- Stage C: Preparing the SA Report to document the appraisal process;
- Stage D: Consulting on the draft plan and the SA Report ; and,
- Stage E: Monitoring the implementation of the plan.

A number of defined tasks are involved in each of these stages. This Scoping Report sets out to discharge the requirements under Stage A, as detailed in Section 2.5 below. All other Stages and their respective tasks are detailed in Section 6.

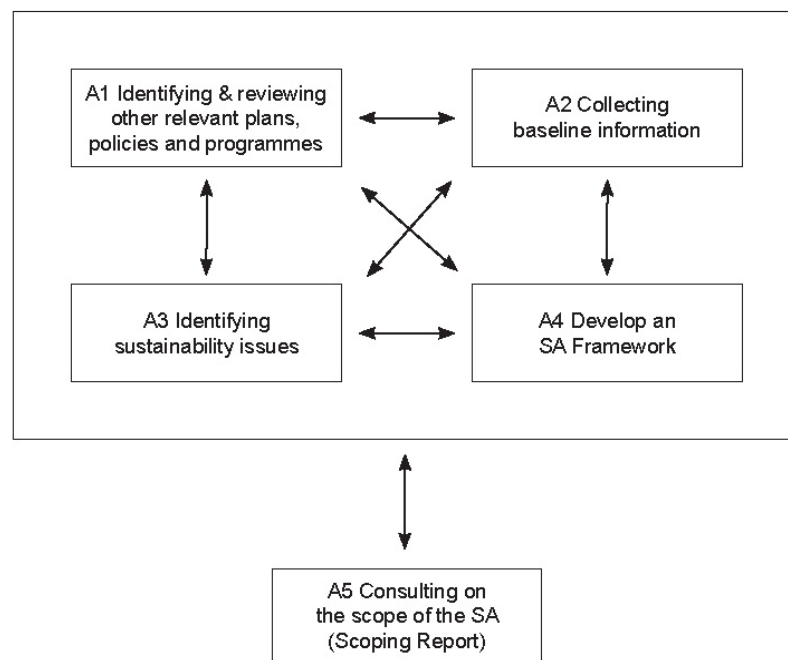
## 2.5 Approach, Contents and Structure of the Scoping Report

The purpose of this Scoping Report is to set the scope of the SA for the Core Strategy DPD as well as inform other DPDs / SPDs. In so doing, Stage A discharges a number of key tasks:

- Task A1: Identifying and reviewing other relevant plans, policies and programmes;
- Task A2: Collecting baseline information;
- Task A3: Identifying sustainability issues;
- Task A4: Developing an SA Framework; and,
- Task A5: Consulting on the scope of the SA.

The interrelationship of these tasks is illustrated in Figure 2.4. It is noted that in order to develop the SA Framework, the key mechanism by which the Core Strategy is to be appraised in terms of its inherent sustainability, there is a strong emphasis on baseline context. This is manifest in data on environmental, social and economic aspects contained within Stage A1 as it relates to policy, Stage A2 in terms of information on the region and Stage A3 in respect of sustainability challenges and opportunities which may be influenced by the Core Strategy.

**Figure 2.4 The Relationship between SA Tasks in Stage A of the SA Process**



Source: Adapted from Figure 3 of the ODPM SA Guidance, 2005

### 2.5.1 Contents and Structure of this Report

This Scoping Report provides the information required for appraising the Core Strategy DPD and related planning policy including the Housing DPD, Cliftonville DPD and Developer Contributions SPD. The following information is provided:

- **Section 3:** A review of international, national, regional, sub regional and Thanet wide plans, policies and programmes (See also Appendix A);

- **Section 4:** A baseline for Thanet and identification of the key sustainability issues;
- **Section 5:** An SA Framework applicable to the Core Strategy and related DPDs for Thanet, including SA Objectives, Decision Making Criteria (DMC), indicators and targets, as well as Matrices for Appraisal (See also Appendix B); and,
- **Section 6:** Information on the next steps of the SA process.

In addition to this Report more detailed information and indicators are provided in three accompanying Scoping Reports for the Housing DPD, Cliftonville DPD and the Developers Contributions SPD.

## 3 Relevant Plans, Policies and Programmes

### 3.1 Requirement and Scope

Local Development Documents (LDDs) and the SA itself will be influenced by many different plans and programmes. This is recognised by the SEA Directive which requires a review of relevant plans and programmes to be completed in the preparation of documents such as those included in the LDDs and the SA.

*'the plan's relationship with other relevant plans and programmes' and 'the environmental protection objectives, established at international, (European) Community or national level, which are relevant to the plan...and the way those objectives and any environmental considerations have been taken into account during its preparation'.*

Directive 2001/42/EC - SEA Annex 1 (a), (e)

The first stage of completing the SA is therefore to review relevant international, national, regional and local, policy guidance, plans and strategies. This review seeks to:

- Ensure LDDs and the SA framework is in line with the requirements of relevant plans and policies. Identify inconsistencies or constraints to be dealt with;
- Identify sustainability objectives, and key targets and indicators that should be reflected in the SA; and,
- Provide baseline data.

### 3.2 Document Review for Thanet

A comprehensive list of key international, national, regional and local documents, plans and policies has been reviewed and a summary of this review is presented in Appendix A. A more detailed review of documents to be read in conjunction with this, specifically relevant to the Housing DPD, Cliftonville DPD and Developer Contributions SPD are provided in the accompanying bespoke Scoping Reports.

The review process provided a valuable source of information and a framework for developing different components of the SA:

- At a high level, key national policies, the RSS and sub regional plans, provided the planning context for Thanet;
- Local documents provided a valuable source of baseline information, and identified local priorities and objectives as well as conditions that the Core Strategy and SA should adhere to; and,
- Several documents including existing appraisals provided sustainability objectives and indicators and guided the development of the SA Framework.

## 4 Baseline Situation and Key Sustainability Issues

### 4.1 Scope and Purpose of the Baseline and Key Issues

---

The SEA Directive requires a discussion of the *'relevant aspects of the current state of the environment and the likely evolution thereof without implementation of the plan or programme'* (Annex 1 (b)). In the case of SA the baseline and identification of key issues must also consider social and economic aspects in addition to the environmental issues specified in the SEA Directive.

The baseline review provides the basis for predicting and monitoring the effects of the LDDs. The sustainability issues identify positive or negative issues for Thanet relevant to the Core Strategy which has the capacity to influence, optimising enhancement opportunities and minimising detrimental impacts associated with the plan.

The collation of baseline data and identification of sustainability issues has been completed for Thanet as a whole and is therefore relevant to all documents in the LDS. The baseline situation and key issues for Thanet will inevitably change over time and so it is important that it is monitored and regularly revised.

### 4.2 Collating Baseline Information and Identifying Sustainability Issues for Thanet

---

#### 4.2.1 Approach and Format

The baseline for Thanet was collated in a number of iterative stages:

The review of plans and policies listed in Appendix A provided an initial understanding of the current situation in Thanet in terms of environmental, social and economic performance and enabled key sustainability issues for Thanet to be identified. This subsequently assisted in the development of the SA Framework.

Indicators were developed for each of the SA Objectives in the framework. Both qualitative and readily available quantitative information was collected for each of the SA Objectives. Indicators relating to objectives specific to other DPDs, such as the Housing DPD, are given in the corresponding Scoping Report.

It should be recognised that due to the interrelationships between the SA Objectives, the baseline data is often relevant to more than one objective. The data collection focused on identifying:

- The current situation in Thanet;
- The trend for Thanet; and
- Regional and national comparisons.

#### 4.2.2 Problems and Constraints

Every effort has been made to provide an accurate baseline review. Production of the baseline has been effective at providing an understanding of current issues, and there is generally enough information available to enable an informed and detailed appraisal. However, during the collection of baseline data some problems were encountered placing limitations on data. This included:

- As the scope of the information required is wide, data has not been available for a number of indicators;
- The consistency between data sources;
- The availability of historic data;
- The availability of up to date information;

- As a result of the scale of data it has not always been possible to divide information up in a way which optimises its value e.g. by geographic area or by different communities or groups. For example, environmental data is often collected at a high level and it has not always been possible to collate at a more localised level;
- Thanet is interlinked socially, economically and physically to adjacent areas and while transboundary issues are important and need to be considered in the appraisal process, it was not possible to represent such complex issues in the baseline data collation; and,
- The baseline situation in Thanet is ever changing, and so baseline data can quickly go out of date, including information contained for this Scoping Report.

#### 4.2.3 Future Baseline

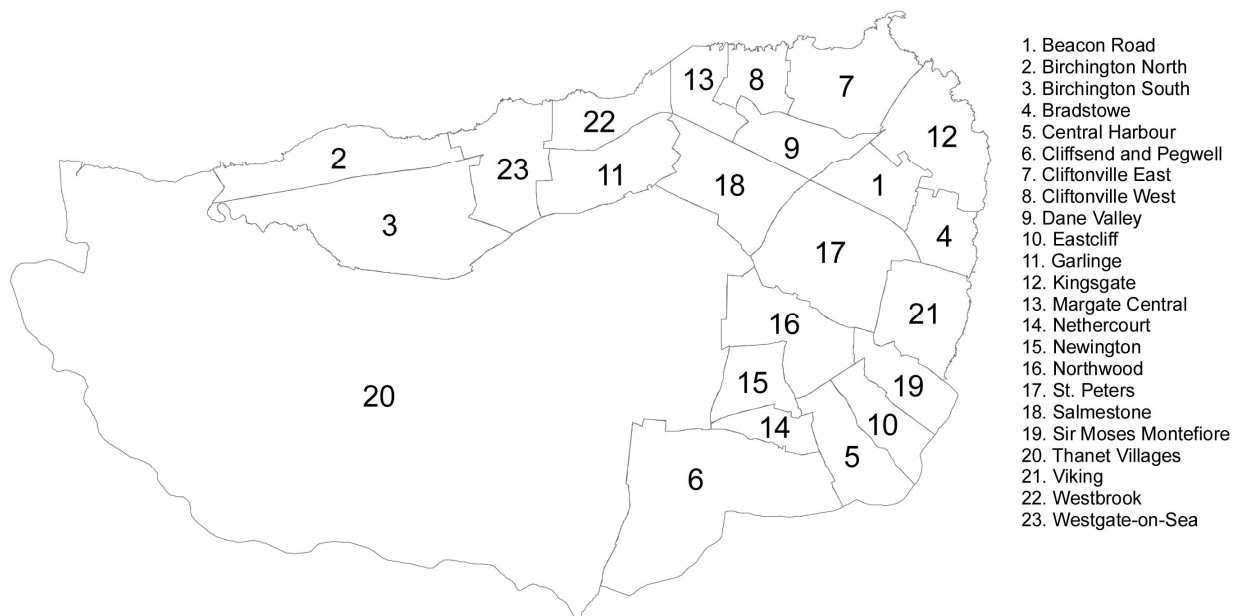
Further consideration should be given to how data could be made available for the ongoing data collection required during the implementation and monitoring of the Core Strategy. This could include expanding the data managed through the central computerised resource for Thanet linked to Geographical information Systems (GIS), consistency of data type, aligning indicators across Thanet and where possible in the Region and other areas, and the collation of new or evolving indicators.

### 4.3 Baseline Situation in Thanet

A review of the Thanet baseline conditions is given below, making comparisons on topics such as housing, employment, education and cultural heritage between Thanet, Kent, the South East and England.

In order to make comparisons between the different areas within Thanet, Wards, which are electoral districts that form part of the UK administrative hierarchy, have been utilised. The different Wards of Thanet are shown in Figure 4.1.

**Figure 4.1 Thanet District Electoral Wards<sup>4</sup>**



Source: [www.Kent.gov.uk](http://www.Kent.gov.uk)

#### 4.3.1 Geography and Situation

The District of Thanet is located on the east coast of England and on the north eastern tip of Kent. Bounded by the English Channel to the north, east and south, the District is predominantly coastal. The District is bordered by the City of Canterbury District to west, and the Dover District to the south.

<sup>4</sup> <http://www.kent.gov.uk/NR/rdonlyres/91197ED9-F552-4D4D-9206-53913A0D1F42/7055/gen106wardboundary0203.pdf>

Thanet comprises three main urban areas: Margate, Broadstairs and Ramsgate, all located on the coast. Interspersed between these are a number of villages and hamlets. As a consequence of the position of the three towns, almost the entire coastal area accommodates substantial built development. From Birchington, via Westgate-on-Sea, Margate, Cliftonville, Kingsgate to Ramsgate there is limited unused seafront.

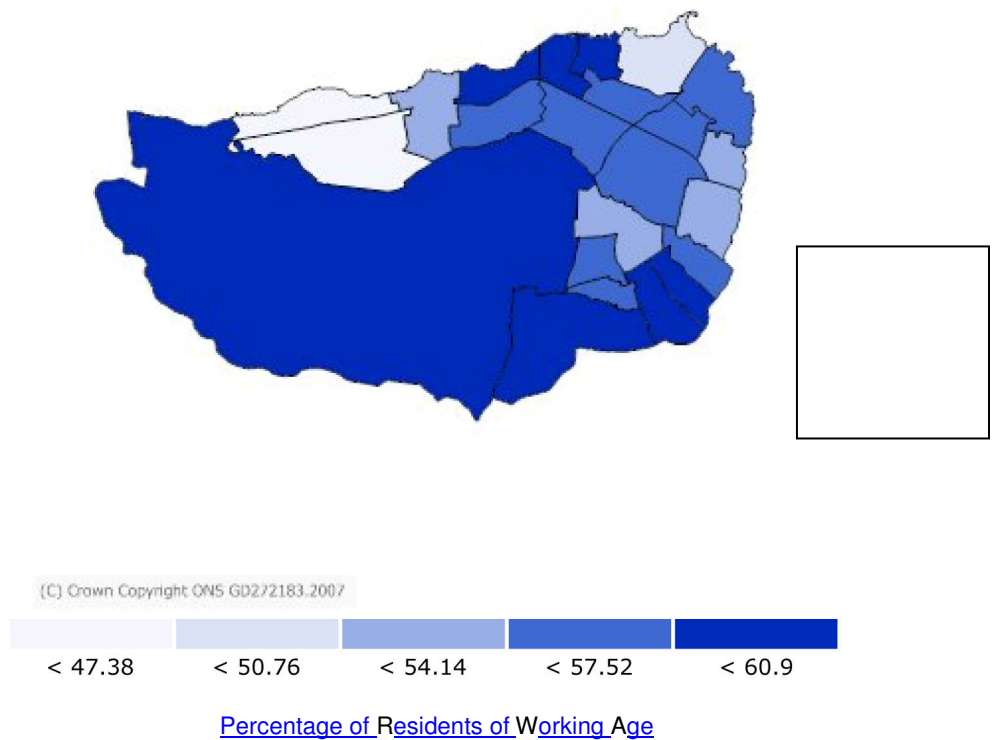
The key transport networks into the area include the recently duelled A299 Thanet Way, which connects to the M2, the A28 Canterbury Road which links with the city of Canterbury and the A256 which serves as the link to District of Dover. The international airport, formerly RAF Manston, is becoming an increasing significant international hub. Ferry services (predominantly freight) are operated by Transeuropa ferries to the Continent from Port Ramsgate<sup>5</sup>.

**4.3.2 Demographics**

Thanet's population has gradually increased in recent years with a net in-migration offsetting a negative natural change (births to deaths). In 2006, the population was estimated at 128,600 with 61,300 males and 67,300 females<sup>6</sup>.

As a popular coastal location, Thanet attracts people of retirement age with the over 60's accounting for 27% of residents<sup>7</sup>. The related effect of high numbers of elderly residents is a low, and decreasing, proportion of people of working age, between 16 and 64, and a lower than average percentage of residents aged between 0 and 15<sup>8</sup>. This demographic skew towards an older population has been a characteristic of the area since at least the 1991 census. The distribution of people between the working ages of 16 and 64 is shown in Figure 4.2.

**Figure 4.2 Distribution of Residents of Working Age (16-64) Across the Wards of Thanet**



Source: [www.nomis.co.uk](http://www.nomis.co.uk), 2001

<sup>5</sup> <http://en.wikipedia.org/wiki/Thanet>

<sup>6</sup> [www.nomisweb.co.uk](http://www.nomisweb.co.uk)

<sup>7</sup> Thanet Local Plan Background Paper: Deprivation, January 2004

<sup>8</sup> Thanet Local Plan Background Paper: Housing

Thanet's seaside location and relatively low property prices attract high numbers of unemployed and asylum seekers to the District. These dependent and vulnerable groups have led to, especially in the more deprived areas, a highly transient population abundant with people with support needs.

Thanet has a number of ethnic minority populations, the largest of which is 'white: Irish' making up 0.9%<sup>9</sup> of the total population. National census data from 2001 shows that Thanet's ethnic minorities are not evenly distributed across the District, but rather concentrated in the wards that are the most socially and economically deprived. One such group categorised as 'white: other white' have high representations in Margate Central (2.68%) and Cliftonville West (3.52%). This clustering of ethnic minority populations is likely to be a result of net in-migration from EU countries into the more socially and economically deprived areas of Thanet.

#### 4.3.3 Economic Trends and Performance

Thanet had the second lowest number of VAT registered companies in Kent in 2001. From 1997 to 2001 Kent saw an increase of 6.5% in VAT registered companies compared to an increase of just 4.4% in Thanet during the same period<sup>7</sup>. In 2002, 2,345 VAT companies were registered in Thanet across a number of industries including Wholesale and Retail (620 companies), Construction (365 companies), Hotels and Restaurants (285 companies) and Manufacturing (235 companies)<sup>10</sup>.

Tourism is an important sector in Thanet's economic performance supporting 4,860 jobs directly and 1,078 indirectly<sup>11</sup>. Figures from the South East England Tourist Board indicate that in the region of 518,000 staying trips were made in 2000 generating £86.56 million of direct expenditure into the local economy. In addition to staying visitors a further 2.6 million day visitors contributed £43.1 million to the local economy in 2000<sup>11</sup>.

#### 4.3.4 Employment

Thanet's history of economic problems is reflected in a persistently high unemployment rate. However, total unemployment rates have improved, decreasing from 16.4% in 1993 to 3.9% in 2006. Despite this improvement, a significant and increasing gap between the rates of unemployment in Thanet compared to Kent (2.3%), the South East (2.5%) and National (2.5%)<sup>11</sup> averages remains.

Only 57.1% of Thanet's population were classed as economically active compared to 63.2% of the population for England and Wales<sup>7</sup>. Of those in work, the percentage of residents employed in professional occupations, as managers or senior officers in Thanet is just under the national average of 42.3% at 40.8%<sup>12</sup>. Residents employed in administrative, secretarial and skilled trade occupations make up 23.9% of the population, 0.9% higher than the national average<sup>12</sup>.

A clear disparity in the employment rates and types can be seen between the different Thanet wards, and is shown in Figure 4.3. Comparing the deprived area of Cliftonville West against the relatively affluent Thanet Villages, for example, shows that Thanet Villages have a substantially higher economically active population (79.6%) compared to Cliftonville West (63.3%). This social gap is **exaggerated** **highlighted** further when comparing employment by occupation that shows the Thanet Villages having 16.8% working as managers and senior officials, and 11.1% working as professionals compared to 12.3% and 6.8% respectively<sup>6</sup> for Cliftonville West.

The differences in employment trends are not restricted to comparisons between rural and urban wards. Comparing Cliftonville West against Eastcliff, another predominantly urban ward close to Ramsgate, shows that Cliftonville West has 5.5% less economically active people than Eastcliff<sup>6</sup> [BW1].

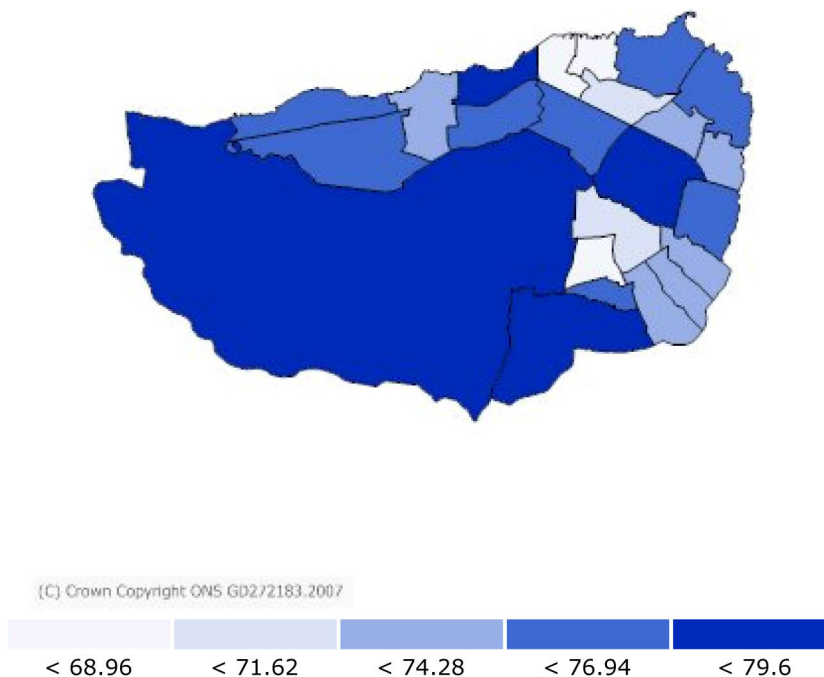
<sup>9</sup> <http://www.neighbourhood.statistics.gov.uk>

<sup>10</sup> [www.thanet.gov.uk](http://www.thanet.gov.uk)

<sup>11</sup> Thanet District Council Local Plan 2006

<sup>12</sup> [www.nomis.co.uk](http://www.nomis.co.uk)

**Figure 4.3 Distribution of the Economically Active Population across the Thanet Wards**



[Percentage of Residents Economically Active](#)

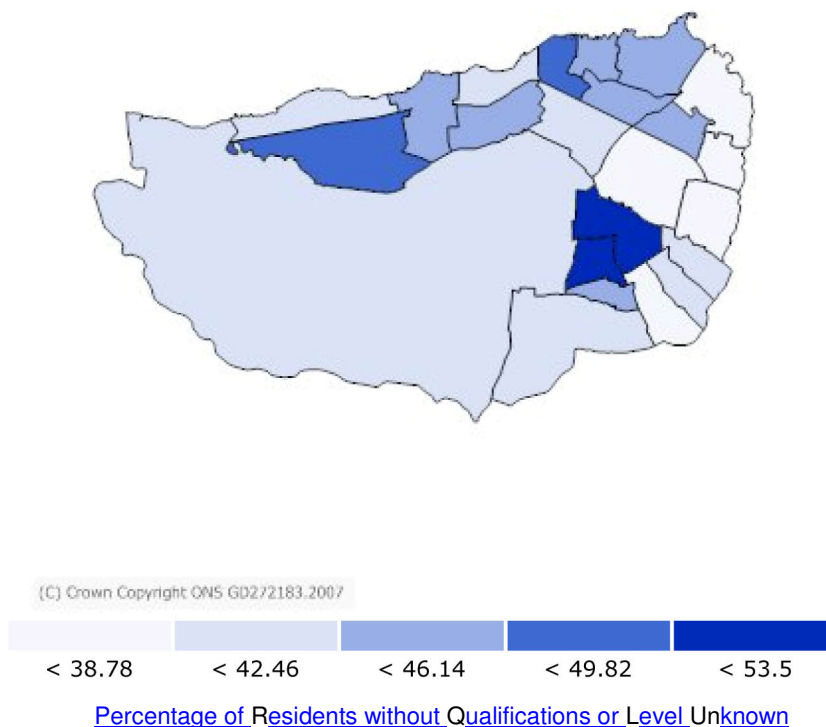
Source: [www.nomis.co.uk](http://www.nomis.co.uk)

**4.3.5 Education and Skills**

Within Thanet, 15.9% of 16-60 year olds have low or very low literacy (15% nationally) and 35.1% have low or very low numeracy (33% nationally)<sup>7</sup>. Just over 34% of people in Thanet aged 16-74 have no qualifications compared to a regional average of 23.92%<sup>12</sup> and whilst 12.9% of residents have a qualification at degree level or higher this is still significantly lower than the England and Wales average of 19.8%<sup>7</sup>.

The distribution of residents in possession of qualifications is uneven across the District. Within the Ward of Margate Central, 46.34% of people are without a qualification. This is the worst lowest in Thanet, 10% worse higher than the national average and 10.3% higher worse than the nearby Bradstowe Ward. Margate Central and Sir Moses Montefiore also have far fewer less residents with higher qualifications, 9.0% and 9.5% respectively, than both the National average (20.4%) and that of Bradstowe (20.5%)<sup>6</sup>. Figure 4.3 shows the distribution of people without qualifications, or level of qualification unknown, across Thanet.

**Figure 4.3 Distribution of People without Qualifications or Level of Qualifications unknown**



Source: [www.nomis.co.uk](http://www.nomis.co.uk)

The number of people engaged in skilled trades varies significantly across the District with Margate Central having 15.9% of the workforce employed in skilled trades compared to 11.4% for Cliftonville East<sup>6</sup>.

**4.3.6 Transport and Commuting**

Thanet has long been perceived as isolated from London, the M25 and access to other parts of the country. The District and County Councils, Government and European agencies have realised that considerable investment would be needed to overcome this perception. A major success was achieved with the completion of the new Thanet Way (A299) from the M2 to Minster Roundabout and the Ramsgate Harbour Approach Road. However, there are still significant strategic issues to be addressed in relation to the poor road and rail links between Thanet and Dover Docks/ Channel Tunnel and the section of Thanet Way between Minster Roundabout and Lord of the Manor. This is combined with a slow rail service between Thanet and London<sup>13</sup>.

Although there is some peak hour congestion, Thanet generally enjoys comparatively free-flowing traffic conditions despite over half (55.8%) of work journeys being made by car<sup>13</sup>. Compared to a national average for households without a car or van of 26.8%, the proportion of Thanet households not in possession of a car or van is 32%, the 5th highest in the region. It is expected that the extensive network of bus services in the area is a result of the low car ownership rather than a positive encouraging factor to low private car ownership.

Access to private transport is an indicator of the social disparity within Thanet, and within some of its Wards, such as Central Margate, the proportion of households without a car or van is significantly higher (52.94%)<sup>12</sup> than both the national and Thanet averages.

Bus usage nationally, which was declining, has now started to grow. Closer examination reveals that growth in London and the other metropolitan areas disguises a drop elsewhere.

<sup>13</sup> Thanet District Council Transport Plan 2005-2011

Bus use in Thanet, however, remains relatively high (10% of trips in 1998) with an annual growth of around 2% year on year<sup>13</sup>.

Within Thanet District, the rail network connects the main centres of population via seven stations. These provide links within Thanet, to other major centres in East Kent as well as to London and beyond. The principal stations are Ramsgate, Broadstairs and Margate, with routes in three directions:

- London via Faversham and Chatham;
- London via Canterbury and Ashford;
- Dover and Folkestone via Sandwich.

Limited facilities currently exist for the carriage of cycles, although the recently introduced Class 375 units do have wheelchair spaces, which can be used for cycles<sup>13</sup>.

The Channel Tunnel Rail Link has benefited the UK as a whole but has led to substantial job losses in the in the cross channel ferry industry. Road links to the south and the channel tunnel are inadequate and therefore the region cannot benefit from this development. Securing the improved rail service from Thanet through Ashford (promised as mitigation to CTRL) is paramount to reversing the perception of transport links in Thanet.

Three quarters of journeys to work in Thanet are less than three miles. Over these distances cycling is usually quicker than either car or public transport however in 1998 just over 3% of journeys to work in Thanet were by bike<sup>13</sup>.

Walking accounts for 26% of all trips made by Thanet residents. In March, 2004 Thanet District Council published its Walking Strategy 'Feet First'. This is intended to compliment Kent County Council's 'Walking Strategy for Kent' published in 2001. 'Feet First' seeks to separate the infrastructure for walking from promoting walking, for whatever purpose. It includes an agreed network of multi purpose walking routes to be developed and on which work has now commenced<sup>13</sup>.

#### **4.3.7 Deprivation**

Thanet's long term economic and social problems have resulted in high levels of deprivation shown in high unemployment and low levels of education. The Department of Employment Training and Rehabilitation (DETR) Indices of Deprivation in 2000 ranked Thanet as the most deprived District in Kent and the 60<sup>th</sup> most deprived District in the whole of England (out of 354 Districts)<sup>11</sup>. Thanet scores in the 25% most deprived Districts in England in all six deprivation categories; employment, health deprivation and disability, education skills and training, housing, geographical access to services and income<sup>7</sup>.

Thanet's Peir Ward, ranking 77<sup>th</sup> most deprived of the 8414 in England, is the most deprived in Kent, the second also in Thanet is the Ethelbert Ward with the national rank of 194<sup>7</sup>. At the opposite end of the scale Margate West, Thanet Parishes and Minster Parish are significantly less deprived with national ranks of 2596, 4347 and 4235 respectively<sup>7</sup>.

#### **4.3.8 Housing**

Approximately 5% of Thanet's population live in the District's rural settlements. The remaining 95% reside in the coastal urban belt including the towns of Margate, Broadstairs and Ramsgate<sup>8</sup>.

Of the approximate 56,000 households in Thanet, the proportion of dwellings that are detached and semi-detached is notably smaller in Thanet (51%) than the County average (58%). Also, the proportion of terraced properties is slightly smaller (24%) compared with the County Average (27%)<sup>8</sup>. The proportion of the stock being purpose built as converted flats, bed sits, maisonettes/apartments is correspondingly larger in Thanet (24%) compared to the County average (16%)<sup>8</sup> so it unsurprising that the percentage of one person households (33.8%) is higher than the national average (30%)<sup>8</sup>.

The Housing Needs Survey completed in 2002 by Thanet District Council highlighted the range of housing issues across the district. The study adopted 10 sub-areas for comparison, each of which is comprised of a number of Wards.

In total it was estimated that 4,377 households in Thanet are currently living in unsuitable housing (7.6% of all households). By sub-area, area 2 (Cecil, Marine, Northdown Park, Pier) had the highest level of unsuitable housing (15.0%) compared with sub-area 5 (Birchington East, Central Westcliff, Newington) which showed the lowest (4.0%). Sub-area 3 (Central Eastcliff, Central Westcliff, Newington) was estimated to have 9.9% of the total households defined as unsuitable accounting for 20% of the total population in unsuitable housing in Thanet<sup>14</sup>.

The distribution of households with special needs is also focused in areas of social deprivation. Sub-area 9 (Northwood, Sir Moses Montefiore) was shown to have 31.9% of households with special needs compared to just 13.5% in sub area 4 (Minster Parish, Thanet Parishes). These trends are likely to be skewed by the large elderly population in the coastal urban areas.

#### **4.3.9 Health**

The comparatively poor health of people within Thanet can not just be attributed to the number of older residents with 22.92% of people suffering a limiting long term illness. This ranks highest in the region (of 67) and is 37<sup>th</sup> of the 376 Districts in England and Wales<sup>7</sup>. Thanet's levels of obesity in adults is also high (23.7%) and the proportion of adults in Thanet that smoke is almost 30%. Of the thirteen districts in Kent, Thanet has the highest mortality rate for lung cancer<sup>15</sup>.

The life expectancy for males is 75 compared to the southeast average of 78.1 and the national average of 76.92 and the life expectancy for women is 79.50 compared to a regional average of 81.9 and a national average of 81.11<sup>9</sup>.

The health of Thanet's residents shows geographical trends with 13.95% of people in Cliftonville West being defined as having 'General health: Not Good' compared to just 9.02% of those in Salmestone. Those people with a limiting long-term illness are highest in Birchington South with more than 1 in 4 people suffering (26.97%) compared to Thanet Villages which at 19.01% is the lowest in the district but still higher than the Kent (17.27%), South East (15.47%) and National (18.23%) averages<sup>9</sup>.

#### **4.3.10 Community Involvement and Cohesion**

Turnout in the Thanet District Council Election in 2007 was 35%, an improvement on the 2003 election when the turnout was 33%<sup>16</sup>.

Thanet has high number of migrants, asylum seekers and unemployed. These groups tend to be associated with a highly transient population and have negative impact on social cohesion and the sense of community. Cliftonville West, between 2000 and 2001, had an inflow rate of 191 persons per 1000 and an outflow rate of 179 persons per 1000 population<sup>9</sup>.

As part of Thanet District Council's attempts to improve community involvement and cohesion, and as part of the requirements set by Central Government, Thanet has both a Community Strategy and Statement of Community Involvement. These documents describe and set out actions to improve Thanet's sense of community with strong emphasis on consultation and public involvement.

<sup>14</sup> Thanet District Council Housing Need Survey 2002

<sup>15</sup> Thanet District Council Corporate Plan 2007-11

<sup>16</sup> <http://www.thanet.gov.uk>

#### 4.3.11 Crime and Safety

Location analysis has shown the streets of Thanet are extremely safe with large areas of Thanet (176 out of 446 output areas) having not had a reported assault for two years and only nine out of the 446 where there has been more than one assault a month<sup>17</sup>.

A community safety survey showed that 91% of Thanet residents felt safe in their own homes and 95.3% felt safe during the day in their own neighbourhood. However, only 61.6% felt safe in their own neighbourhood at night<sup>17</sup>.

In 2005 the Kent Fire Service responded to 1,923 incidents including 336 primary fires (i.e. dwelling, non-derelect buildings, road vehicles and other outdoor buildings). These incidents resulted in three fatalities, 36 non-fatal casualties and 24 rescue incidents<sup>9</sup>.

Information taken from the Home Office Crime statistics for England and Wales show that for the period April 2005-March 2006 Thanet had marginally above the national rates of crime, peaking between July and September in 2005 when rates reached 27.3 per 1000 population compared to the national average of 25.9<sup>18</sup>. Compared to national averages Thanet has relatively higher incidences of 'violence against a person' and 'criminal damage' with 'burglary' apparently increasing.

#### 4.3.12 Biodiversity<sup>[BW2]</sup>

Thanet has number of local and international protected areas for conservation and habitat protection (listed in Appendix D). These environmentally designated areas are concentrated along the 32km of attractive chalk cliff and sandy beach coastline and include internationally important feedings grounds for birds and rare chalk reef and cave habitats. These areas include the international designations;

- 1 Ramsar Site (Thanet Coast and Sandwich Bay);
- 1 Special Protection Area (Thanet Coast and Sandwich Bay);
- 2 Special Areas of Conservation (Sandwich Bay and Thanet Coast);

and the national designations;

- 1 National Nature Reserve (Sandwich and Pegwell Bay);
- 2 Sites of Special Scientific Interest (Thanet Coast and Sandwich Bay to Hacklinge Marshes); and,
- 3 Regionally Important Geological Sites.

Under the Habitats Directive (92/43/EEC) Article 6 any plan or project likely to have a significant effect on an area of conservation, especially where that area is of international importance, shall be subject to an assessment of any likely adverse effect in view of the site's conservation objectives. In the instance of the core strategy, due to the number of internationally designated sites and the District wide scope, an assessment under the Habitats Directive may be needed.

#### 4.3.13 Air Quality and Climate Change

'Rising to the challenge: the impacts of climate change in the South East: Technical Report'<sup>19</sup> produced for the UK Climate Impacts Programme (UKCIP) identifies the changes in climate that will be evident in the South East by the 2080's. These include;

- It will be warmer all year round, with most of the warming in summer and autumn;
- Winters will be wetter, and summers will be drier;
- It will be sunnier in the summer, and this, with the higher temperatures, will mean a large increase in summer evaporation;

<sup>17</sup> Thanet Crime and Disorder Audit Strategy:2005 to 2008 from Audit to Action

<sup>18</sup> <http://www.crimestatistics.org/tool>

<sup>19</sup> Rising to the challenge: The impact of climate change in the South East: Technical Report, UNCIP, 1999

- It will be windier, with an increased risk of severe storms;
- The sea level in the English Channel will be 54 centimetres above its present level.

The impact of this change in climate will be water shortages during periods of high demand that will threaten and dry out wetland habitats and lead to increased pollution as river flows diminish. There is also likely to be more damage from flooding and floodplains may become more dangerous places to live, and coasts and lower river reaches are expected to face a higher frequency of storm surge tides. Erosion is set to increase which in Thanet may have serious impacts on the Cliff features that hold environmental designations.

The report does however highlights potential advantages for the region with the changing climate with opportunities for farmers, for example, to grow navy beans, soya and sunflowers in many places. The tourism and recreation industries to could benefit considerably from warmer conditions with increasing visitor numbers as traditional European destinations become too hot.

Thanet District Council has declared an Air Quality Management Area in Birchington. This area encompasses the Square, and sections of the roads leading in to it including Station Road and Canterbury Road. The pollutant declared is Nitrogen Dioxide (NO<sub>2</sub>).

#### **4.3.14 Cultural Heritage**

There is an extensive and rich variety of building forms, character and heritage within the built-up area of Thanet. The urban areas range from the 'urban village', such as Pegwell and St Peter's, to the modern shopping centre and bright lights of Margate, the wooded areas and special atmosphere of Broadstairs to the historic harbour, lively marina and cross-Channel port of Ramsgate. There is also a diversity of heritage throughout Thanet's villages<sup>11</sup>.

To maintain this cultural heritage Thanet has 20 conservation areas, 14 scheduled monuments and 1 registered park and garden (listed in Appendix D) as well as 2,600 Listed Buildings and a number of archaeological sites dating back to pre-historic times. The District also has associations with important historical figures including JMW Turner, AW Pugin, Sir Moses Montefiore, Charles Dickens, Karl Marx and Vincent Van Gogh.

#### **4.3.15 Landscape and Townscape**

A landscape Assessment Survey made by the District Council in 1991 described a gently undulating landscape with few dominant natural features, shaped largely by arable farming, combined with a historical lack of tree cover. However areas of high landscape value do exist such as the Pegwell Bay and Former Wantsum Channel where uninterrupted long views of the sea and marshes along the undeveloped coastline exist<sup>11</sup>.

As part of the conservation of the Townscape and Landscape character of Thanet, TDC has identified six landscape character areas;

- Pegwell Bay;
- The Former Wantsum Channel;
- The Former Wantsum North Shore;
- The Central Chalk Plateau;
- Quex Park;
- The Urban Coast.

### **4.4 Key Sustainability Issues for Thanet**

---

The SEA Directive confirms that the Environmental Report should include the following information:

*'any existing environmental problems which are relevant to the plan or programme including, in particular, those relating to any areas of particular environmental importance, such as areas designated pursuant to Directives 79/409/EEC and 92/43/EEC<sup>20</sup>.*

The examination of policy and baseline characteristics, as detailed in Chapters 3 and 4 has allowed sustainability issues to be identified which may be influenced by the Core Strategy DPD; Housing DPD; Cliftonville DPD and Developer Contribution SPD.

Presented in Table 4.1 are the Key Sustainability Issues for Thanet. Individual Scoping Reports of DPDs may replicate these issues or identify specific issues related to that DPD. It should be noted that to assist in transparency, sub issues have been included for each of the key issues. These provide an indicator of the particular facet of financial, environmental and societal (the three core elements of sustainability) that the issue is most relevant to. This is helpful in developing relevant objectives and indicators during SA Stage A4.

---

<sup>20</sup> Annex I (c)

Table 4.1 Key Sustainability Issues for Thanet

Key Sustainability Issue	Sub Issue	Description	Validation	Source
ECONOMY	Economic Development	Support for industrial and employment development at key sites within the District.	<p>Thanet is currently an annual net exporter of employees with 11,000 living in the Thanet region and travelling to seek employment elsewhere, compared to 2,000 people who travel into Thanet for employment</p> <p>Economic development at business Parks such as Manston Park, Eurokent and Thanet Reach along with economic development at employment sites adjacent to the sandwich corridor expected to be available as services employment land within the Local Plan.</p>	<p>Thanet DC Corporate Themes, Plans, Policies and Programmes</p> <p>Thanet Local Plan</p> <p>Thanet Local Development Framework – Discussion Paper on Issues and Options</p>
		Create and maintain local employment opportunities centred around fairly paid jobs.	<p>Thanet has relatively high levels of unemployment, and social and economic deprivation. Thanet's history of economic problems is reflected in a persistently high unemployment rate. However, total unemployment rates have improved, decreasing from 16.4% in 1993 to 3.9% in 2006. Despite this improvement a significant and increasing gap between the rates of unemployment in Thanet compared to Kent (2.3%), the South East (2.5%) and National (2.5%)<sup>21</sup> averages remains. Thanet is also weak in the percentage of residents in managerial or professional occupations.</p> <p>There are fewer people with professional jobs in Thanet than in Kent and England.</p> <p>There are a higher proportion of professional people in skilled trades, sales and customer service, process plant and machinery operatives and elementary occupations in Thanet than in Kent.</p>	<p>Thanet DC Corporate Themes, Plans, Policies and Programmes</p> <p>Thanet Local Plan</p> <p>Thanet Local Development Framework – Discussion Paper on Issues and Options</p> <p>Local Futures 2004</p>
		Development of grant funding packages for firms investing in Thanet.	<p>Thanet is identified as a 'Priority Area for Regeneration'. The area has received Tier 2 and Tier 3 Assisted Area Status under the Regional Selective Assistance Programme and Objective 2 status under European Structural Funds</p> <p>Thanet is also part of the East Kent Priority Area for Regeneration</p>	<p>Thanet DC Corporate Themes, Plans, Policies and Programmes</p> <p>Thanet Local Plan</p> <p>Thanet Local Development Framework – Discussion Paper</p>

<sup>21</sup> Thanet District Council Local Plan 2006

Key Sustainability Issue	Sub Issue	Description	Validation	Source
				on Issues and Options
		Ensuring that the strategic future of Ramsgate supports commercial diversification and capital investment as well as providing a strong revenue stream for Thanet District Council.	Thanet retail centres are considered unattractive investment areas for major retailers due to relative isolation, limited catchment and the current high dependence on larger retail centres outside the Thanet region - 2000 figures show that £99million expenditure was spent outside the Thanet region, the majority being in Canterbury, which is contrary to PPG 13 on transport.	Thanet DC Corporate Themes, Plans, Policies and Programmes Thanet Local Plan Thanet Local Development Framework – Discussion Paper on Issues and Options
		Supporting regeneration of key areas within the District.	Thanet is identified through RPG9 as a 'Priority Area for Regeneration'. The area has received Tier 2 and Tier 3 Assisted Area Status under the Regional Selective Assistance Programme and Objective 2 status under European Structural Funds  Thanet is also part of the East Kent Priority Area for Regeneration	Thanet DC Corporate Themes, Plans, Policies and Programmes Thanet Local Plan Thanet Local Development Framework – Discussion Paper on Issues and Options  RPG9 Regional Planning Guidance for the South East
	<b>Economic Structure</b>	Ensuring that improving economic prosperity provides benefits to the whole of Thanet focussing regeneration on key wards.	The Thanet Local Plan identifies four key areas in need of special attention: Margate Old Town Area, King Street in Ramsgate, Upper High Street in Ramsgate and Cliftonville West.  Thanet has poor housing stock with a high proportion of semi-derelict, vacant or homes in a state of poor repair. In addition there is a high proportion of multiple occupation premises which leads to pressure on parking, nuisance, noise and visual deterioration of houses and gardens.	Thanet DC Corporate Themes, Plans, Policies and Programmes Thanet Local Plan Thanet Local Development Framework – Discussion Paper on Issues and Options

Key Sustainability Issue	Sub Issue	Description	Validation	Source
		Ensuring that existing building stock (particularly redundant buildings) is brought into use for employment where appropriate.	There are more than 3,000 empty (residential and commercial) properties of which 900 have been empty for over 6 months.	Thanet DC Corporate Themes, Plans, Policies and Programmes Thanet Local Plan Thanet Local Development Framework – Discussion Paper on Issues and Options
		The protection and enhancement of natural assets including Blue Flag status of beaches in support of tourist economy.	Figures from the South East England Tourist Board indicate that in the region of 518,000 staying trips were made in Thanet in 2000 generating £86.56 million of direct expenditure into the local economy, however the number of staying trips has decreased leading to the closure of many hotels and bed and breakfast accommodation units.	Thanet DC Corporate Themes, Plans, Policies and Programmes Thanet Local Plan Thanet Local Development Framework – Discussion Paper on Issues and Options
		The protection and enhancement of historic assets.	Scheduled monuments in Thanet include Anglo Saxon Cemeteries and remains at Monkton and Dane Valley, Salinestone Grange, Quex Park Settlements, and various ring ditches and enclosures.	Thanet DC Corporate Themes, Plans, Policies and Programmes Thanet Local Plan Thanet Local Development Framework – Discussion Paper on Issues and Options
	<b>Economic Connectivity</b>	The development of key transport gateways to the region including the development of Kent International Airport.	Kent International airport has a potential capacity of 1,000 million passengers per annum with 250,000 tonnes freight per annum.	Thanet DC Corporate Themes, Plans, Policies and Programmes Thanet Local Plan Thanet Local Development Framework – Discussion Paper on Issues and Options

Key Sustainability Issue	Sub Issue	Description	Validation	Source
		Mobility and access to employment opportunities through provision of sustainable public modes of transport.	<p>Compared to a national average of 26.8% the proportion of Thanet households not in possession of a car or van is 32%, the 5th highest in the region.</p> <p>The percentage of residents with no car has fallen since 1991.</p> <p>Approximately a third of Thanet's residents still do not have access to a car.</p> <p>The percentage of employees driving to work has fallen by 2% in Thanet since 1991.</p> <p>The percentage of people working from home has almost doubled between 1991-2001.</p>	<p>Thanet DC Corporate Themes, Plans, Policies and Programmes</p> <p>Thanet Local Plan</p> <p>Thanet Local Development Framework – Discussion Paper on Issues and Options</p>
		Links to opportunities associated with regional growth and development including major economic opportunities associated with 2012 Olympics.	Kent International Airport has a potential capacity of 1,000 million passengers per annum with 250,000 tonnes freight per annum. The emerging County Structure Plan supports the development of the airport – however outlines that development must safeguard the environment and minimise the impact on local communities.	<p>Thanet DC Corporate Themes, Plans, Policies and Programmes</p> <p>Thanet Local Plan</p> <p>Thanet Local Development Framework – Discussion Paper on Issues and Options</p>
<b>SOCIAL</b>	<b>Safety</b>	Initiatives leading to greater public safety including appropriate strategies for intervention (Community Wardens, Police Community Support and Secured by Design).	<p>Approximately 91% of the Thanet population feel safe in their homes – the main focus of interest is in Margate Central Ward and Cliftonville West Ward. Local analysis has shown that the streets of Thanet are extremely safe – large areas of Thanet have had no reported crime in two years with only nine of 446 output areas reporting one crime per month.</p> <p>All three town centres are awarded the National 'Safer Shopping Award' with shoplifting and commercial burglary falling year on year.</p>	<p>Thanet DC Corporate Themes, Plans, Policies and Programmes</p> <p>Thanet Local Plan</p> <p>Thanet Local Development Framework – Discussion Paper on Issues and Options</p> <p>Thanet Crime and Disorder Police Audit 2004</p>

Key Sustainability Issue	Sub Issue	Description	Validation	Source
	<b>Housing</b>	<p>The proportion of affordable housing and availability of decent housing.</p> <p>Support for vulnerable people living in non decent accommodation.</p> <p>Support for the development of appropriate new housing and community facilities (including Westwood).</p>	<p>The Councils Urban Housing Capacity Study identifies the potential capacity of the urban area to yield 3,000 homes comprising 2943 units from previously developed land. The Local Plan anticipates the need to provide 6,000 new dwellings in the period 2001 – 2016 therefore a shortfall is identified.</p> <p>The 2002 Local Housing Needs Study indicated that if all the affordable housing needs in Thanet are to be met in the 5 year programme and additional 4,510 dwellings will be required, with an annual estimated shortfall of 902 affordable dwellings required to address needs.</p> <p>There is a modest shortfall of affordable housing in rural areas of Thanet such as Minster which leads to increased pressures and closure of rural schools, rural public transport facilities which negatively effects mobility.</p>	<p>Thanet DC Corporate Themes, Plans, Policies and Programmes</p> <p>Thanet Local Plan</p> <p>Thanet Local Development Framework – Discussion Paper on Issues and Options</p> <p>PPG 3 Housing (2006)</p> <p>Urban Housing Capacity Study (Kent District council)</p> <p>2002 Local Housing Needs Study</p>
	<b>Mobility</b>	<p>Access to key services and employment opportunities through public transport provision.</p>	<p>Transport links in Thanet are relatively poor but have been improved in recent years.</p> <p>The Channel Tunnel Rail Link has benefited the UK as a whole but has led to substantial job losses in the in the cross channel ferry industry. Road links to the south and the channel tunnel are inadequate and therefore the region cannot benefit from this development. Securing the improved rail service from Thanet through Ashford (promised as mitigation to CTRL) is paramount to reversing the perception of transport links in Thanet.</p>	<p>Thanet DC Corporate Themes, Plans, Policies and Programmes</p> <p>Thanet Local Plan</p> <p>Thanet Local Development Framework – Discussion Paper on Issues and Options</p>

Key Sustainability Issue	Sub Issue	Description	Validation	Source
	Deprivation	Levels of economic disparity within the region and need to maximise opportunities for all sectors of society. Access to employment opportunities identified as an issue in limiting the realisation of Thanet's potential.	<p>The Office of National Statistics Indices of Deprivation indicates that Thanet is ranked the most deprived District in Kent and 60<sup>th</sup> in England (out of 354). Per ward Margate is ranked the 77<sup>th</sup> most deprived Ward out of a total of 8414 with Ethelbert ward also in Margate being 194<sup>th</sup>.</p> <p>Thanet Scores in the 25% most deprived Districts in England in all 6 deprivation categories (employment, health deprivation, disability, educational skills and training, housing, geographical access to services and income)</p> <p>13.5% of the District's population are separated or divorced in comparison to England and Wales being 10.6% - this is the second highest rate in the region.</p>	<p>Thanet DC Corporate Themes, Plans, Policies and Programmes</p> <p>Thanet Local Plan</p> <p>Thanet Local Development Framework – Discussion Paper on Issues and Options</p>
	Health	<p>Maintenance of high levels of healthcare provision including dependent sectors of the community.</p> <p>Population demand on healthcare and support services (PCT initiatives).</p>	<p>The poor health of Thanet cannot just be attributed to the number of older residents with 22.92% of people suffering a limiting long term illness. This ranks highest in the region (of 67) and is 37<sup>th</sup> of the 376 Districts in England and Wales<sup>7</sup>. Thanet's levels of obesity in adults is also high (23.7%) and the proportion of adults in Thanet that smoke is almost 30%. Of the thirteen districts in Kent, Thanet has the highest mortality rate for lung cancer<sup>22</sup>.</p>	<p>Thanet DC Corporate Themes, Plans, Policies and Programmes</p> <p>Thanet Local Plan</p> <p>Thanet Local Development Framework – Discussion Paper on Issues and Options</p>

<sup>22</sup> Thanet District Council Corporate Plan 2007-11

Key Sustainability Issue	Sub Issue	Description	Validation	Source
	Education and Skills	Access to skills development for all sectors of society. Particular demand associated with transient and dependent sectors of society.	39% of East Kent's children's homes providing care for socially excluded children are located in Thanet. A large proportion of children remain in the area through to adulthood compounding a dependency culture.  Within Thanet 15.9% of 16-60 year olds have low or very low literacy (15% nationally) and 35.1% have low or very low numeracy (33% nationally) <sup>7</sup> .  34.33% of people in Thanet aged 16-74 have no qualifications compared to a regional average of 23.92% <sup>12</sup> and whilst 12.9% of residents have a qualification at degree level or higher this is still significantly lower than the England and Wales average of 19.8% <sup>7</sup> .	Thanet DC Corporate Themes, Plans, Policies and Programmes review and baseline, South East Regional Integrated Regional Framework, Thanet Statement of Community Involvement  Basic Skills Agency 1999
ENVIRONMENT	Perceptions and Image	Need to maintain the appearance, vitality and safety of the street scene within Thanet particularly associated with town centres and coastal areas.	With their competing catchment areas Thanet's towns have struggled to retain a vital commercial core and have lost many visitor attractions resulting in the stock of guest house and hotels being reduced and converted to private residential multiple user accommodation.	Thanet DC Corporate Themes, Plans, Policies and Programmes review and baseline, South East Regional Integrated Regional Framework, Thanet Statement of Community Involvement
	Biodiversity	Strong regional natural resources including chalk platforms and statutorily protected sites need to be protected and enhanced.	The Thanet coast is protected by a number of international and national conservation and biodiversity designations. These include Special Protected Areas, a Ramsar Site and Sites of Special Scientific Interest. A full list of designations made for biodiversity grounds are given in Appendix D.  The whole area is classified as a Nitrate Vulnerable Zone, and one Air Quality Management Area has been identified.	Thanet DC Corporate Themes, Plans, Policies and Programmes review and baseline, South East Regional Integrated Regional Framework, Thanet Statement of Community Involvement, Kent Biodiversity Action Plan.

Key Sustainability Issue	Sub Issue	Description	Validation	Source
	<b>Climate Change and Flood Risk</b>	Nation need to consider impacts associated with climate change and particular imperative within coastal locale. Risk of flooding must be considered in DPD development.	Thanet has a key advantage as flood risk does not pose a constraint to identifying sufficient housing site, commercial or industrial site opportunities.	Thanet DC Corporate Themes, Plans, Policies and Programmes review and baseline, South East Regional Integrated Regional Framework, Thanet Statement of Community Involvement, Kent Biodiversity Action Plan, Environment Agency

## 5 Sustainability Appraisal Framework

### 5.1 Purpose and Overview

The SA Framework provides a way in which sustainability effects of the Core Strategy can be described, analysed and compared and is central to the SA process<sup>23</sup>.

The SA Framework is made up of a series of SA Objectives and Decision Making Criteria (DMC), which have been developed in this case specifically for Thanet, supported by a range of indicators and targets. The SA Framework is used as a way of checking whether the objectives and indicators are the best possible for sustainability and can be seen as a methodological benchmark against which the social, environment and economic effects of a plan can be tested.

### 5.2 Objectives and Decision Making Criteria (DMC)

#### 5.2.1 Development

There were a number of key starting points for developing SA Objectives and DMC. These are outlined below:

**Sustainability Objectives SEA Requirements** - It is essential that the SA Framework includes the topics required by the SEA Directive. These are:

*'the likely significant effects on the environment including on issues such as biodiversity, population, human health, fauna, flora, soil, water, air, climatic factors, material assets, cultural heritage including architectural and archaeological heritage, landscape and the interrelationship between the above factors.'* EU Directive 2001/42/EC (Annex 1)

**UK Sustainable Development Objectives** – The UK Government has recently revised its Sustainable Development Strategy and produced *Securing the Future*, 2005. In this it revised its core objectives as outlined in Figure 2.1. The SA Framework should support and incorporate these objectives.

**Established Objectives and Locally Relevant Issues and Parameters** - The new planning system requires the Core Strategy to be linked with the Community Strategy<sup>24</sup>. An exercise was undertaken to identify the key themes referred to within the Community Strategy and compare these against the proposed SA Objectives. In addition to the Community Strategy, the key objectives of the Integrated Regional Framework for South East England and objectives of the Regional Spatial Strategy (RSS) were also identified and compared against the proposed SA Objectives. This is summarised in Table 5.1.

No further potential SA Objectives were identified, and the objectives proposed for the SA were considered to be robust.

#### 5.2.3 Proposed SA Objectives and DMC

The SA Objectives are listed in Table 5.1 below. The full SA objectives, indicators and supporting DMC and indicators are given in Appendix B.

The SA objectives have grouped against the themes of economy, social and environment, to tie in with SA policy. Each objective has been numbered to assist with cross referencing. The derived objectives are as follows:

#### 5.2.2 Social

1. To provide a sustainable supply of housing including an appropriate mix of types and tenures to reflect demand [and need](#);
2. To maintain appropriate healthcare provision and access to healthcare facilities for all

<sup>23</sup> Sustainability Appraisal of regional spatial strategies and local development documents, 2005

<sup>24</sup> Community Strategy for Thanet, June 2004

sectors of society;

3. To provide access to appropriate educational facilities for all sectors of society including focus on training vulnerable and welfare dependant workers with skills necessary to ensure year round employment;

4. To increase public safety and reduce crime and fear of crime;

5. To provide a sustainable public transport network that allows access to key facilities, services and employment opportunities without reliance on private vehicles;

6. To provide appropriate key facilities to support vulnerable people and reduce the level of deprivation identified across the wards;

7. To support campaigns to inform to educate and to work towards changing behaviours of residents, consumers and the wider community with regard to the reduction and recycling of waste;

8. To create a vibrant balanced communities where residents feel a 'sense of place' and individual contribution is valued.

### 5.2.3 Economic

9. To provide access to employment opportunities for all sectors of society ensuring that everyone who wants to work has the opportunity to secure appropriate paid employment;

10. To ensure the sustainable development of the proposed economic growth and encourage industrial and employment development at key sites within the District to support priority regeneration areas-;

11. To protect and enhance the areas natural, semi-natural [environments](#) and street scene to support the tourist economy;

12. To improve efficiency in land use through the re-use of previously developed land and existing buildings, including reuse of materials from buildings, and encourage urban renaissance;

13. To ensure that a sustainable pattern of development is pursued.

~~14. To protect and enhance the areas natural, semi-natural and street scene to support the tourist economy.~~

### 5.2.4 Environmental

~~15~~<sup>14</sup>. To conserve and enhance the character and quality of the area's landscape and townscape particularly associated with town centres and coastal areas.

~~15~~<sup>16</sup>. To preserve and enhance sites, features and areas of historic archaeological or architectural importance, and their settings;

~~16~~<sup>7</sup>. To improve air quality in the District's Air Quality Management Areas;

~~17~~<sup>8</sup>. To provide a sustainable public transport network that allows access to key facilities, services and employment opportunities without reliance on private vehicles;

~~18~~<sup>9</sup>. To develop key sustainable transport links between Thanet and the wider Kent region and beyond, including road, rail and air;

~~19~~<sup>20</sup>. To reduce waste generation and disposal and achieve the sustainable management of waste;

20~~2~~1. To ensure development within the District responds to the challenges associated with climate change;

21~~2~~. To ensure appropriate development control procedures in place to manage the risks of coastal erosion, coastal and fluvial flood risk, in accordance with PPS25;

22~~3~~. To conserve and enhance biodiversity;

23~~4~~. To protect and improve the quality of fluvial and coastal water resources, including European designated sites;

24~~5~~. To reduce the global, social and environmental impact of consumption of resources by using sustainably produced and local products;

25~~6~~. To increase energy efficiency and the proportion of energy generated from renewable sources in the area.

While it is acknowledged that some objectives could fit in a number of themes, it is not considered to be a barrier to the effective delivery of the appraisal process due to the following:

- The impact on each of the SA Objectives is assessed individually, and the appraisal also considers the impact on all the SA Objectives as a whole rather than by theme; and
- It must be recognised that the themes and SA Objectives are inextricably interlinked, contributing and impacting on each other.

It is important to consider the links between the SA Objectives when completing the appraisal and this has been noted throughout. The links between the SA Objectives and other plan objectives is included in the following Table 5.1.

**Table 5.1: SA Objectives Cross Referenced Against other Plan Objectives**

Objective Number / Thanet District SA Objective	Community Strategy Themes (2004)	Regional Objectives (RSS and IRF)
1. To provide a sustainable supply of housing including an appropriate mix of types and tenures to reflect demand.	Improve the choice, supply, quality and accessibility of housing available to Thanet people.	To ensure everyone has the opportunity to live in a decent, sustainably constructed and affordable home. (Objective 1)
2. To maintain appropriate healthcare provision and access to healthcare facilities for all sectors of society.	<p>To develop a better understanding of mental health, co-ordinated action to prevent mental ill health, improve access to prevention services and provide improved support for people with mental health.</p> <p>To reduce the numbers of people dying prematurely from cancer, heart disease and stroke.</p> <p>Older people being encouraged to play an active part in their community and being able to live safely and securely in their own home for as long as possible.</p> <p>A range of family support services, children's services and a range of affordable childcare places which contribute towards enabling every baby, child and young person to have an equal start in life and opportunity for self fulfilment throughout their development.</p>	To improve the health and well-being of the population and reduce inequalities in health. (Objective 3)

Objective Number / Thanet District SA Objective	Community Strategy Themes (2004)	Regional Objectives (RSS and IRF)
<p>3. To provide access to appropriate educational facilities for all sectors of society including focus on training vulnerable and welfare dependant workers with skills necessary to ensure year round employment.</p>	<p>Lifelong learning To provide all residents of Thanet with good literacy, language, numeracy and information technology skills.</p> <p>Good quality education services available to all with every one having access to pre-school with good prospects of securing employment and the opportunity to access further education and training.</p> <p>To raise aspirations and enable all to achieve their full potential through the provision of high quality further education and training.</p> <p>To raise aspirations and increase the number of people participating in Higher education in the Thanet Area.</p> <p>A range of high standard facilities available to Thanet residents and everyone able to access and participate in a leisure and sporting activity.</p>	<p>To raise educational achievement across the region and develop the opportunities for everyone to acquire the skills needed to remain in work. (Objective 5)</p>
<p>4. To increase public safety and reduce crime and fear of crime.</p>	<p>Safer Community To improve the quality of life of the community by reducing the number of acts of vandalism.</p> <p>To create safer public places where communities are free from fear of crime.</p> <p>To enable victims to become free of abusive relationships [Domestic Violence].</p> <p>Increased public confidence in the criminal justice system that offenders will be brought to justice.</p>	<p>To reduce crime and the fear of crime. (Objective 6)</p>

Objective Number / Thanet District SA Objective	Community Strategy Themes (2004)	Regional Objectives (RSS and IRF)
5. To provide a sustainable public transport network that allows access to key facilities, services and employment opportunities without reliance on private vehicles.	<p>Transport Fast efficient rail, road, sea and air links between Thanet and main markets in UK and overseas</p> <p>An integrated public transport system that enables residents without private cars to access jobs, training and facilities.</p>	To improve accessibility to all services and facilities. (Objective 8)
6. To provide appropriate key facilities to support vulnerable people and reduce the level of deprivation identified across the wards.		<p>To reduce poverty and social exclusion. (Objective 4)</p> <p>To reduce poverty and social exclusion and close the gap between the most deprived areas in the South East and the rest of the region (objective 4)</p>
9. To provide access to employment opportunities for all sectors of society ensuring that everyone who wants to work has the opportunity to secure appropriate paid employment.	A diverse economy providing high quality jobs for Thanet leading to full employment.	To ensure high and stable levels of employment so everyone can benefit from the economic growth of the area. (Objective 20)
10. To ensure the sustainable development of the proposed economic growth and encourage industrial and employment development at key sites within the District to support priority regeneration areas .	<p>A one-stop-shop for business support.</p> <p>Provision of utility infrastructure and high quality space on key sites to accommodated inward and local investment demand.</p>	<p>To sustain economic growth and competitiveness across the region. (Objective 21)</p> <p>To stimulate economic revival in priority regeneration areas. (Objective 22)</p>

Objective Number / Thanet District SA Objective	Community Strategy Themes (2004)	Regional Objectives (RSS and IRF)
<p><b>1144.</b> To protect and enhance the areas natural, semi-natural and street scene to support the tourist economy.</p> <p><b>1445.</b> To conserve and enhance the character and quality of the area's landscape and townscape particularly associated with town centres and coastal areas.</p> <p><b>156.</b> To preserve and enhance sites, features and areas of historic archaeological or architectural importance, and their settings.</p>	<p>Culture and Tourism Thanet's cultural and tourist attractions are effectively marketed, well maintained and expanded upon so as to attract a steady supply of visitors from the UK and overseas.</p> <p>Wildlife, Coast and country side – Thanet's coast and countryside is a rich and diverse series of linked habitats, providing wildlife havens and a good environment for all.</p> <p>Everyone in Thanet has convenient access to public open spaces that are safe, attractive and diverse.</p> <p>Public spaces and urban areas are attractive, successful and safe for both residents and visitors.</p>	<p>To encourage the development of a buoyant, sustainable tourism sector. (Objective 24)</p>
<p>12. To improve efficiency in land use through the re-use of previously developed land and existing buildings, including reuse of materials from buildings, and encourage urban renaissance.</p>		<p>To improve efficiency in land use through the re-use of previously developed land and existing buildings, including reuse of materials from buildings, and encourage urban renaissance. (Objective 10)</p>
<p><b>167.</b> To improve air quality in the District's Air Quality Management Areas.</p>		<p>To reduce air pollution and ensure air quality continues to improve (Objective 11)</p>
<p><b>178.</b> To provide a sustainable public transport network that allows access to key facilities, services and employment opportunities without reliance on private vehicles.</p> <p><b>189.</b> To develop key sustainable transport links between Thanet and the wider Kent region and beyond, including road, rail and air.</p>		<p>To develop a sustainable effective transport network, reducing the reliance on the need for private vehicles. (Objective 8)</p>

Objective Number / Thanet District SA Objective	Community Strategy Themes (2004)	Regional Objectives (RSS and IRF)
<p><del>19</del><del>20</del>. To reduce waste generation and disposal and achieve the sustainable management of waste</p> <p>7. To support campaigns to inform to educate and to work towards changing behaviours of residents, consumers and the wider community with regard to the reduction and recycling of waste</p>	Waste Generation – the culture of waste reduction is deeply embedded within Thanet households, businesses and public services.	
8. To create a vibrant balanced communities where residents feel a 'sense of place' and individual contribution is valued	Everyone able to be part of the local community and to influence the way it operates and develops.	
<p><del>20</del><del>1</del>. To ensure development within the District responds to the challenges associated with climate change.</p>	Energy Efficiency – Thanet sustainable in terms of energy generation and usage.	To increase energy efficiency, and proportion of energy generated from renewable sources in the region (objective 19).
<p><del>21</del><del>2</del>. To ensure appropriate development control procedures in place to manage the risks of coastal erosion, coastal and fluvial flood risk, in accordance with PPS25.</p>		To reduce the risk of flooding and the resulting detriment to public well-being, the economy and the environment. (Objective 2)
13. To ensure that a sustainable pattern of development is pursued.		
<p><del>22</del><del>3</del>. To conserve and enhance biodiversity.</p> <p><del>23</del><del>4</del>. To protect and improve the quality of fluvial and coastal water resources, including European designated sites</p>		To conserve and enhance the regions biodiversity (Objective 13)
<p><del>24</del><del>5</del>. To reduce the global, social and environmental impact of consumption of resources by using sustainably produced and local products.</p>		To reduce the global, social and environmental impact of consumption of resources by using sustainability produced and local products (objective 16)
<p><del>25</del><del>6</del>. To increase energy efficiency and the proportion of energy generated from renewable sources in the area.</p>		

## 5.3 Indicators and Targets

### 5.3.1 Development

Indicators and targets have been developed for each SA Objective. These enable the baseline situation to be assessed and monitored to facilitate positive change. When selecting indicators and targets a number of issues were taken into consideration:

- Indicators had to be measurable and useful;
- A wide range of indicators are already collected in Thanet and nationally, and it was considered important to align indicators with these as far as possible;
- While it is preferable that the selection of indicators has available data it is important that data does not dictate what is measured. Therefore indicators which are new or are known to be problematic in relation to data collection have at times been included (where no alternative indicators are available) and gaps should be left in the baseline until data either becomes available or new methods for collecting such data have been established.
- In order to make the best use out of these indicators and time spent collecting data, consideration was given to the ability to utilise the indicators for monitoring sustainability impacts during Stage E of the SA process.

Core sources of indicators were:

- Office of National Statistics Website;
- Thanet District Council Annual Monitoring Report 2006/7;
- Integrated Regional Framework 2004: A Better Quality of Life in the South East;
- Thanet District Council Local Plan 2006;
- Thanet District Council Housing Strategy 2006-2010.

### 5.3.2 Proposed Indicators and Targets

The proposed indicators and targets and their source are contained in Appendix B.

## 5.4 Matrices for Appraisal

### 5.4.1 Development

A series of Matrices have been developed to guide the SA process. In developing these it was important to ensure that they considered the scope and requirements of an appraisal. This included confirmation of the following key aspects:

#### Stages of Appraisal

The SA Framework has to be applicable to all stages of the appraisal process. The key stages of the appraisal as outlined in the SA Guidance 2005 are known as Stage B and include:

- Testing plan objectives against SA Objectives;
- Appraisal of strategic options;
- Appraisal of preferred options (draft policies); and,
- Consideration of the impacts of the plan as a whole.

#### Requirements of SEA

The appraisal process also has to meet the requirements of the SEA Directive. These include:

*"the likely significant effects.... These effects should include secondary, cumulative, synergistic, short, medium and long-term, permanent and temporary, positive and negative effects" (Annex I (f) and footnote)*

*“the measures envisaged to prevent, reduce and as fully as possible offset any significant adverse effects on the environment of implementing the plan or programme...” (Annex I (g))*

#### **5.4.2 Proposed Matrices for Appraisal**

Matrices have been developed for each stage of the appraisal. Copies of the proposed Matrices for Appraisal are contained in Appendix C.

- Matrix 1 Testing SA Objectives Against Plan Objectives;
- Matrix 2 Predicting and Assessing the Impacts of Options;
- Matrix 3 Predicting and Assessing the Impacts of a Preferred Option (Draft Policy);
- Matrix 4 Assessing Secondary Cumulative and Synergistic impacts of a Whole Plan;

Each matrix guides the process for:

- Predicting and assessing the effects including cumulative and synergistic (not relevant for Matrix 1);
- Identifying mitigation and enhancement opportunities; and
- Drawing conclusions on the option, policy or plan.

The Matrices have been developed in spreadsheet format to enable flexibility and ease of use, and enable any quantitative aspects of the appraisals to be automated.

## 6 Next Steps

### 6.1 Overview

---

There are a number of stages required to complete the SA process for Thanet's Core Strategy as outlined below. They are in accordance with current ODPM SA Guidance 2005. Proposals include completing Stage A and undertaking all the tasks required in Stages B-E, although some variation may be necessary in the case of related SPDs as outlined below. It will be essential that individual plan development programmes incorporate enough time to complete the SA. The following appraisal stages must be completed.

### 6.2 Completing Stage A: Consulting on and amending the Scoping Report

---

This Scoping Report provides the basis for SA of the Core Strategy and informs the Housing DPD, Cliftonville DPD and the Developers Contribution SDP, for which bespoke SA Scoping Reports have been generated. The Scoping Report is subject to a 5 week consultation period. For this Scoping Report this consultation is due to take place in March 2008 and will include the statutory consultee bodies (Natural England, English Heritage and Environment Agency) and other stakeholders with social, environmental and economic responsibilities or interests. The Scoping Report will also be made available to other key stakeholders in, and close to, the Thanet District. Following consultation, stakeholder feedback may result in the need to make changes to the SA Framework. Where appropriate, the Scoping Report will be re-released to consultees to demonstrate the changes which have been addressed as a consequence of the consultation process.

#### 6.2.1 Stakeholder Involvement

The identification and engagement of key stakeholders is considered to be critical to support the development of strategic policy and plans, whilst opportunities for wider community involvement are considered important to ensure the process remains open and inclusive.

### 6.3 Stage B: Appraising the Effects of the Plan (Options, Preferred Options (Draft Policies) and Draft Plan)

---

#### 6.3.1 Purpose

This stage of the SA process is where the significant effects of the Core Strategy as defined by the SEA Directive, and mitigation and enhancement opportunities are identified. However, it is important to note the SA informs decision making but will not make decisions. In the case of the Options Appraisal the ODPM SA Guidance 2005 states:

*'It is not the role of the SA to determine which of the options should be chosen... This is the role of those who have to decide which strategy is appropriate. The role of the SA is to assist with the identification of the appropriate options, by highlighting the sustainability implications of each, and by putting forward recommendations for improvement.'*  
Appendix 11.

#### 6.3.2 Key Tasks

The Appraisal Process includes the following tasks in accordance with SEA Directive requirements:

- Test the plan objectives against the sustainability objectives;
- Predict and assess the effects of different issues and options;
- Predict and assess the effects of the preferred options (draft policies);
- Assess the effects of the draft plan as whole (cumulative and synergistic impacts); and

- Identify mitigation and enhancement opportunities in order to improve the sustainability impact of the draft plan

As outlined in section 5.4, Appraisal Matrices have been developed to guide and document this process and are contained in Appendix C for comment.

### **6.3.3 Developing Monitoring Systems**

The SEA Directive requires the impacts of a plan on sustainability to be monitored and it is an important ongoing element of the SA process. It can test predicted effects, help ensure the SA Objectives are being achieved (although it is acknowledged that there will be many factors that influence this) and help ensure unforeseen issues are identified so they can be mitigated where possible. As the Core Strategy is appraised its monitoring needs will thus be identified.

Thanet District Council is also required to develop monitoring systems to assess the general implementation and effectiveness of LDDs and produce an Annual Monitoring Report for the LDF. There will be overlap between sustainability and LDD monitoring systems. This is recognised by the ODPM SA Guidance 2005 and it suggests that monitoring systems can be aligned. To increase efficiency further monitoring systems should be aligned with existing data collection or monitoring systems in place within Thanet.

The indicators and targets produced for the SA Framework could form a sensible basis for developing a monitoring system as:

- Data for each of the indicators needs to be collected anyway to keep the baseline up to date;
- They have already been aligned as far as possible with other Thanet data collection systems; and
- It has been recommended that all LDD indicators align themselves to these.

Appendix 14 of the ODPM SA Guidance for Regional Planning Bodies and Local Planning Authorities November 2005 provides a guide to developing monitoring systems. The SA Report will include recommendations for the monitoring process.

## **6.4 Stage C: Document the Appraisal Process and Preparing the SA Report**

---

### **6.4.1 Documenting the Preferred Options and Whole Plan Appraisal**

The draft SA Report must be produced to sit alongside the consultation of the draft LDD, in this case the Core Strategy. It should detail the SA process and the findings of the options and preferred options (draft policies) appraisals and will need to meet the requirements of the SEA Directive for an Environmental Report, and clearly demonstrate how the SEA requirements have been met. The SA Report will initially be produced in draft and consulted upon to ensure that statutory consultees are content that the Environment report discharges the requirements of the SEA Directive.

At this stage it is proposed that SA Report follows the format contained in the ODPM SA Guidance 2005.

## **6.5 Stage D: Consulting on the Draft Plan and the SA Report**

---

### **6.5.1 Consultation Process**

The Draft SA Report should be consulted on alongside a draft LDD. This should include the SEA Consultation Bodies, the public and other relevant bodies and stakeholders with social, environmental and economic responsibilities or interests. Before consultation proceeds the latest ODPM Guidance should be checked to ensure it is in line with this.

### 6.5.2 Appraising Significant Changes and Amending the SA Report

If significant changes are made to the preferred options following consultation, an SA will be required on these changes. The SA Report will need to be amended to reflect changes. This may take the form of an annex or addendum to the SA Report.

Similarly if there are any changes to the monitoring proposals these will also need to be amended.

### 6.5.3 Independent Examination

Once the LDD is finalised the final SA Report should be submitted to the Secretary of State for Independent Examination. Further information on this is contained in the ODPM SA Guidance 2005.

## 6.6 Stage E: Monitoring the Implementation of the Plan

### 6.6.1 Implementing the Monitoring Systems

The monitoring systems developed in Stage B and consulted on in Stage D should be implemented.

### 6.6.2 Responding to Adverse or Unexpected Effects

If monitoring reveals adverse or unexpected effects then actions should be taken to address these. These could include actions by Thanet City Council or other bodies and may include:

- Reviewing policies;
- Changing the way policies are implemented; or
- Changing other plans and programmes to compensate for the LDD.

Recommendations for dealing with adverse or unexpected effects should be included in the SA Report.

**Table 6.1 Proposed Format for SA Report (Source ODPM Draft SA Guidance, 2004)**

Example Structure and Contents of the Sustainability Report	
Structure of Report	Information to Include:
Components making up the Environmental Report	Table sign-posting the components of the SA Report which make up the Environmental Report for the purposes of the SEA Directive
1. Summary and outcomes	1.1. Non-technical summary 1.2. Statement on the difference the process has made 1.3. How to comment on the report
2. Appraisal Methodology	2.1. Approach adopted to the SA 2.2. When the SA was carried out 2.3. Who carried out the SA 2.4. Who was consulted, when and how
3. Background	3.1. Purpose of the SA and the EA Report 3.2. Plan objectives and outline of contents 3.3. Compliance with SEA Directive Regulations
4. Sustainability objectives, baseline and context	4.1. Links to other strategies, plans and programmes and sustainability objectives 4.2. Description of the social, environmental and economic baseline characteristics and the predicted future baseline

Example Structure and Contents of the Sustainability Report	
Structure of Report	Information to Include:
	<p>4.3. Difficulties in collecting data and limitations of the data</p> <p>4.4. The SA framework, including objectives, targets and indicators</p> <p>4.5. Main social, environmental and economic issues and problems identified</p>
5. Plan issues and options	<p>5.1. Main strategic options considered and how they were identified</p> <p>5.2. Comparison of the social, environmental and economic effects of the options</p> <p>5.3. How social, environmental and economic issues were considered in choosing the preferred options</p> <p>5.4. Other options considered, and why these were rejected</p> <p>5.5. Proposed mitigation measures.</p>
6. Plan policies	<p>6.1. Significant social, environmental and economic effects of the preferred policies</p> <p>6.2. How social, environmental and economic problems were considered in developing the policies</p> <p>6.3. Proposed mitigation measures</p> <p>6.4. Uncertainties and risks</p>
7. Implementation	<p>7.1. Links to other tiers of plans and programmes and the project lever (environmental impact assessment, design guidance, etc)</p> <p>7.2. Proposals for monitoring</p>

## 7 Summary

This Scoping Report defines the work proposed for the SA of Thanet District Council's Core Strategy, and provides an indication of the proposed approach to the Housing DPD, Cliftonville DPD and Developers Contribution SPD. It is intended to provide baseline information; initial identification of key issues and to set the framework for enabling the Sustainability Appraisal to be conducted.

The Scoping Report contains a review of international, national, regional, sub regional and Thanet plans, policies and programmes, a description of the current baseline for Thanet and identification of the Districts key sustainability issues and sets out a general SA Framework for Thanet. This latter item includes SA Objectives, Decision Making Criteria, indicators and targets and Appraisal Matrices.

This report is complemented by bespoke SA Scoping Reports specifically for the Housing DPD, Cliftonville DPD and the Developers Contribution SDP and produced under separate cover.

Consultees are invited to comment on the proposed approach to the SA described within this report. It is intended that comments from the Environment Agency, Natural England and English Heritage, as well as non-statutory consultees, are incorporated within evolving plan-making process. It is recognised that during a previous round of consultation, consultee comments have been useful in refining baseline data and the SA Framework.

There are a number of stages required to complete the SA process and this report details the next stages in the process. These include completing Stage B to guide option development for the plan and undertaking all the tasks required under Stages C to E.



**Appendix A**  
**Review of Plans**  
**Policies and**  
**Programmes**

---

## A1 Review of International through to Local Thanet Plans, Policies and Programmes

PPP	Key objectives relevant to DPD and SPD and SA	Key targets and indicators relevant to DPD, SPD and SA	Implications for the DPD and SPD	Implications for SA
<b>International</b>				
European Spatial Development Perspective (ESDP)	<p>ESDP considers that there are strong links and impacts from urban development and spatial organisation on sustainable development, as well as on environmental quality, energy consumption, mobility, health and quality of life.</p> <p>The ESDP put forward three spatial policy guidelines:</p> <ol style="list-style-type: none"> <li>1. Development of a balanced and polycentric urban system and a new urban-rural relationship;</li> <li>2. Securing parity of access to infrastructure and knowledge; and</li> <li>3. Sustainable development, prudent management and production of nature and cultural heritage.</li> </ol>	<p>The ESDP does not contain targets. It sets a number of guiding principles:</p> <ul style="list-style-type: none"> <li>• Policies and decisions with implications for spatial development must not have negative impacts on sustainable development;</li> <li>• Spatial planning should balance public interest between the objectives of social cohesion and sustainability and need of competitiveness and market imperatives;</li> <li>• Conservation of the rich diversity of European territory is paramount; and</li> <li>• Spatial planning should be a tool for combating local and global climate change.</li> </ul>	Mainly relevant at national and regional scale.	Mainly relevant at national and regional scale.
European Sustainable Development Strategy (ESDS)	<p>The ESDS focuses on four key-priorities:</p> <ol style="list-style-type: none"> <li>1. Limiting climate change and increasing the use of clean energy;</li> <li>2. Addressing threats to public health;</li> <li>3. Managing natural resources more responsibly; and</li> <li>4. Improving the transport system and land use.</li> </ol>	<p>The ESDS sets a number of headline indicators to meet its priorities. These are</p> <ul style="list-style-type: none"> <li>• Limit climate change and increase the use of clean energy;</li> <li>• Address threats to public health;</li> <li>• Manage natural resources more responsibly; and</li> <li>• Improve the transport system and land-use management.</li> </ul>	Mainly relevant at national and regional scale.	Mainly relevant at national and regional scale.
EC Council Directive on the Conservation of Natural Habitats of Wild Fauna and Flora (Directive)	<p>The aim of the Habitats Directive is to create a coherent European ecological network known as Natura 2000. This network will consist of a series of Special Areas of Conservation (SACs) which will protect habitats and species of Community interest.</p>	<p>Concerns flora, fauna and natural habitats of EU importance. Seeks to establish a framework of protected areas, and ensure biodiversity.</p>	<p>Plan policies should support the objectives of the directives.</p> <p>Where a DPD or SPD impact on an environmentally designated site, especially if that site is</p>	<p>Reflect objectives of the directives in the SA framework.</p>

PPP	Key objectives relevant to DPD and SPD and SA	Key targets and indicators relevant to DPD, SPD and SA	Implications for the DPD and SPD	Implications for SA
92/43/EC) 1992			of international importance, under the EC Habitats Directive Article 6 it will require an Appropriate Assessment.	
European Biodiversity Strategy	Aims to anticipate, prevent and attack the causes of significant reduction or loss of biodiversity at the source. A range of objectives is identified under four themes: <ol style="list-style-type: none"> <li>1. Conservation and sustainable use of biological diversity;</li> <li>2. Sharing of benefits arising out of the utilisation of genetic resources;</li> <li>3. Research, identification and monitoring of information; and</li> <li>4. Education, training and awareness.</li> </ol>	No specific targets identified.	No direct implications.	Key European Context.
Kyoto Protocol to the UN Framework Convention on Climate Change - 1999	The ultimate objective of the Convention is "to achieve stabilization of atmospheric concentrations of greenhouse gases at levels that would prevent dangerous anthropogenic (human-induced) interference with the climate system."	Does not include any targets.	Mainly relevant at national and regional scale.	Mainly relevant at national and regional scale.
Waste Framework Directive 92/43/EEC and daughter directives e.g.; Landfill Directive 99/31/EC	Waste production should be minimized through the promotion of clean technology and reusable or recyclable products. Where the possible secondary raw materials should be recovered from waste by recycling, reuse and reclamation or any other process, as well as used to produce energy. Waste should be managed with minimal environmental impact.	Advocates the use of a waste hierarchy – Reduce, reuse and recycle.	Implications for general waste management policies and also policies relating specifically to the waste energy facility.	Reflect objectives of the directives in the SA framework.
European Biodiversity Strategy 1998	This strategy aims to anticipate, prevent and attack the causes of significant reduction or loss of biodiversity at the source. This will help both to reverse present trends in biodiversity reduction or losses and to place species and ecosystems, including agro-ecosystems, at a satisfactory conservation status, both within and beyond the territory of the European Union (EU).	No specific targets identified.	Mainly relevant at national and regional scale.	Mainly relevant at national and regional scale.
Council	The Birds Directive provide for the protection,	Conservation of all species of naturally	Where a DPD or SPD	Mainly relevant at

PPP	Key objectives relevant to DPD and SPD and SA	Key targets and indicators relevant to DPD, SPD and SA	Implications for the DPD and SPD	Implications for SA
Directive 79/409/EEC on the conservation of wild birds	management and control of all species of naturally occurring wild birds in the European territory of Member States. Requires measures to preserve a sufficient diversity of habitats for all species of wild birds. To conserve the habitat of certain particularly rare species and of migratory species.	occurring birds in the wild state in the European territory of the Member States to which the Treaty applies. Seeks to establish a framework of protection and ensure biodiversity. Targets are set by the Member States at national, regional and a local level.	impact on an environmentally designated site, especially if that site is of international importance, under the EC Habitats Directive Article 6 it will require an appropriate assessment	national and regional scale.
EC Water Framework Directive 2000/60/EC	This directive expands the scope of water protection to all waters, surface waters and groundwater with the prime objective of achieving "good status" for all waters by a set deadline. Water management based on river basins.	All inland and coastal waters to reach good ecological and chemical status by 2015. By 2010 ensure adequate contribution from key sectors to the recovery of costs of water services.	Mainly relevant at national and regional scale. Take measures to maintain or restore all waters to be detailed in regional and local plans.	Reflect objectives of the directive in the SA framework.
Integrated Pollution Prevention Control Directive - 1996/61/EC	The Directive contains basic rules for integrated permits, which cover the whole environmental performance of Plants i.e. emissions to air, water and land, generation of waste, use of raw materials, energy efficiency, noise, prevention of accidents, risk management, etc. The permits must be based on the concept of Best Available Technique (BAT).	In order to receive a permit an industrial or agricultural installation must comply with certain basic obligations. In particular, it must: <ul style="list-style-type: none"> <li>• Use all appropriate pollution-prevention measures, namely the best available techniques (which produce the least waste, use less hazardous substances, enable the recovery and recycling of substances generated, etc.);</li> <li>• Prevent all large-scale pollution;</li> <li>• Prevent, recycle or dispose of waste in the least polluting way possible;</li> <li>• Efficient energy use;</li> <li>• Ensure accident prevention and damage limitation; and</li> <li>• Return sites to their original state when the activity is over.</li> </ul>	Mainly relevant at national and regional scale.	Mainly relevant at national and regional scale.

PPP	Key objectives relevant to DPD and SPD and SA	Key targets and indicators relevant to DPD, SPD and SA	Implications for the DPD and SPD	Implications for SA
Convention on the protection of Archaeological Heritage	The Convention contains provisions for the identification and protection of archaeological heritage, its integrated conservation, the control of excavations, the use of metal detectors and the prevention of illicit circulation of archaeological objects, and the dissemination of information.	It was ratified by the UK in September 2000, and provides for a broad definition of 'archaeological heritage' that includes 'structures, constructions, groups of buildings, developed sites, moveable objects, monuments of other kinds as well as their context, whether situated on land or under water.	Mainly relevant at national and regional scale.	Mainly relevant at national and regional scale.
<b>National</b>				
River Basin Planning Strategy: Water for Life and Livelihoods (Consultation), EA - Jan 2005	<p>RBMP are the key management unit of the Water Framework Directive. The RBMP objectives of the Strategy are;</p> <ol style="list-style-type: none"> <li>1. Create a more integrated, long-term approach to river basin planning and management;</li> <li>2. Work closely with partners and provide increased opportunity for stakeholder involvement; and</li> <li>3. Aim to achieve environmental, social and economic benefits concurrently.</li> </ol>	Publish River Basin Management Plans by the end of 2009. Ensure appropriate reference to the Water Framework Directive in Planning Policy Statements.	<p>Direct regulation of abstraction from and emission to the water environment.</p> <p>Economic instruments – taxes, grants and incentives.</p> <p>New emphasis on collaborative agreements – land use planning and regeneration policies.</p> <p>Links between land use planning and River Basin Management Planning.</p>	Must address the requirements of the Strategy and Water Framework Directive for integrated, long-term approach and environmental, social and economic benefits.
Habitats Regulations for England and Wales (amended) 2007	The Regulations came into force on 30 October 1994, and have been subsequently amended. The Regulations provide for the designation and protection of 'European sites', the protection of 'European protected species', and the adaptation of planning and other controls for the protection of European Sites.	<p>The 2007 amendments:</p> <ul style="list-style-type: none"> <li>• simplify the species protection regime to better reflect the Habitats Directive;</li> <li>• provide a clear legal basis for surveillance and monitoring of European protected species (EPS);</li> <li>• toughen the regime on trading EPS that are not native to the UK;</li> <li>• ensure that the requirement to carry out appropriate assessments on water abstraction consents and land use plans is explicit.</li> </ul>	<p>Appropriate Assessment needs to be undertaken in respect of any plan or project which:</p> <p>a) either alone or in combination with other plans or projects would be likely to have a <i>significant effect</i> on a European Site, and</p> <p>b) is not directly connected with the</p>	SA will need to consider if there is a requirement for an Appropriate Assessment of DPD.

PPP	Key objectives relevant to DPD and SPD and SA	Key targets and indicators relevant to DPD, SPD and SA	Implications for the DPD and SPD	Implications for SA
			management of the site for nature conservation.	
Rural Strategy 2004, DEFRA - Jul 2004	<p>The strategy reviews the Rural White Paper, 2000 after the creation of Defra in 2001. It sets out a new devolved and targeted approach to rural policy and delivery over the next 3-5 years. There are three priorities for rural policy;</p> <ol style="list-style-type: none"> <li>1. Economic and social regeneration – supporting enterprise across rural England but targeting greater resources at areas of greatest need;</li> <li>2. Social justice for all – tackling rural social exclusion and providing fair access to services and opportunities;</li> <li>3. Enhancing the value of our countryside – protecting the natural environment.</li> </ol>	<ul style="list-style-type: none"> <li>• Reduce the gap in productivity by 2008;</li> <li>• Improve accessibility of services for rural people;</li> <li>• Production of a second generation Local Public Service Agreement;</li> <li>• Provide affordable housing; and</li> <li>• Make the countryside more accessible and promote sustainable tourism.</li> </ul>	<p>There is a new PPS on sustainable development in rural areas including;</p> <ul style="list-style-type: none"> <li>• Social inclusion.</li> <li>• Effective protection and enhancement of the environment.</li> <li>• Prudent use of natural resources.</li> <li>• High and stable levels of economic growth and employment.</li> </ul>	Strategic priorities for creating Sustainable Communities apply equally in rural and urban areas.
Saving Lives: Our Healthier Nation White Paper (DoH – 1999)	<p>Strategy is largely an action plan for tackling poor health and improving the health of everyone in England, especially the worst off.</p> <p>Addresses inequality with a range of initiatives on education, welfare to work, housing, neighbourhoods, transport and the environment, which will help improve health.</p>	<p>By 2010:</p> <ul style="list-style-type: none"> <li>• Reduce the death rate from cancer in people under 75 by at least a fifth;</li> <li>• Reduce the death rate from coronary heart disease and stroke and related diseases in people under 75 by at least two fifths;</li> <li>• Reduce the death rate from accidents by at least a fifth and to reduce the rate of serious injury from accidents by at least a tenth;</li> <li>• Reduce the death rate from suicide and undetermined injury by at least a fifth; and</li> <li>• Increased education and training for health.</li> </ul>	DPD and SPD should support the provision of health care facilities where appropriate.	Consider sustainability objectives that aim to improve human health.
The Planning Response to Climate Change, (ODPM - Sep 2004)	<p>Provides planning professionals with an overview of current thinking and state of knowledge on planning response to climate change.</p> <p>It aims to stimulate planners to look for new strategies to respond to climate change in partnership with developers and the wider community.</p>	<p>LPA's must be:</p> <ul style="list-style-type: none"> <li>• Familiar with the UK's commitment to its climate change programme;</li> <li>• Actively involved in regional climate change studies;</li> <li>• Identifying areas at risk of flooding an unstable land on the DPD and SPD;</li> <li>• Recognise the availability of water</li> </ul>	Climate change sensitive development checklist sets out the role of SA and EA in assessing development plans, DPD and SPDs for climate change considerations.	Consider efforts to respond to climate change in the framework

PPP	Key objectives relevant to DPD and SPD and SA	Key targets and indicators relevant to DPD, SPD and SA	Implications for the DPD and SPD	Implications for SA
	It aims to strengthen policies that will mitigate and reduce greenhouse gas emissions.	resources in formulating development plans; • Include climate change sensitive policies on biodiversity and landscape. • Set a context in which there is less need for travel; • Set out a framework for minimizing greenhouse gas emission from waste management; and • Consider an integrated framework for climate sensitive built developments.		
The UK Government Sustainable Development Strategy: Securing the Future (DTI - Mar 2005)	The strategy key themes are:  1. Living Within Environmental Limits - Respecting the limits of the planet's environment, resources and biodiversity – to improve our environment and ensure that the natural resources needed for life are unimpaired and remain so for future generations; 2. Ensuring a Strong, Healthy and Just Society - Meeting the diverse needs of all people in existing and future communities, promoting personal wellbeing, social cohesion and inclusion, and creating equal opportunity for all; 3. Achieving a Sustainable Economy - Building a strong, stable and sustainable economy which provides prosperity and opportunities for all, and in which environmental and social costs fall on those who impose them (polluter pays), and efficient resource use is incentivised; 4. Promoting Good Governance - Actively promoting effective, participative systems of governance in all levels of society – engaging people's creativity, energy, and diversity; and 5. Using Sound Science Responsibly - Ensuring policy is developed and implemented on the basis of strong scientific evidence, whilst taking into account scientific uncertainty (through the precautionary principle) as well as public attitudes and values.	The Strategy introduces a set of high-level indicators; the <i>UK Framework Indicators</i> to give an overview of sustainable development and priority areas shared across the UK.  There will also be a mix of indicators, targets and performance measures in the individual strategies for the UK Government, Scotland, Wales and Northern Ireland.  The UK Government Strategy includes all 20 of the <i>UK Framework Indicators</i> and a further 48 indicators related to priority areas.	The DPD and SPD will have to take into account the Key Objectives and targets of the strategy.  The Strategy states that it must be implemented by working across departmental boundaries and through all levels of government.  Development must be focused on long-term solutions, ensuring we get the full environmental, social and economic dividend for money spent.	This Strategy is the highest level plan for sustainable development.  All aspects of this strategy must be reflected fully within the appraisal process.
Waste not, Want not - A	Provides a robust and long-term economic and regulatory framework for waste management.	• Slow waste growth from 3% to 2% per annum;	Waste management strategy to be	SA should include indicator relating to

PPP	Key objectives relevant to DPD and SPD and SA	Key targets and indicators relevant to DPD, SPD and SA	Implications for the DPD and SPD	Implications for SA
Strategy for tackling the waste problem in England December 2002	Invest in new waste facilities and a package of measures to boost the progress on sustainable waste management.  Provide additional funding accompanied by radical reform of delivery structures.	<ul style="list-style-type: none"> <li>Boost the national recycling rates to at least 45% by 2015;</li> <li>Divert significant amounts of waste from landfill;</li> <li>Increase choice for industry, Local Authorities and households over how waste is managed;</li> <li>Stimulate innovation in waste treatment; and</li> <li>Reduce damage to the environment while increasing resource productivity.</li> </ul>	incorporated into waste policies within the DPD and SPD.	waste. Will also need indicators on re-use, recycling and recovery of waste as well, to demonstrate the movement away from disposal.
Waste Strategy 2000 for England and Wales	Describes a vision for managing waste and resources better. Sets out changes needed to deliver more sustainable development.	Key targets include; <ul style="list-style-type: none"> <li>Reducing industrial and commercial waste sent to landfill 85% of 1998 levels by 2005;</li> <li>Recycle or compost 25% of household waste by 2005, 30% of household waste by 2010 and 33% by 2013; and</li> <li>Restrict the amount of biodegradable municipal waste sent to landfill.</li> </ul>	Waste management strategy to be incorporated into waste policies within DPD and SPD.	SA will include indicator on minimization of waste. Will also need indicators on re-use, recycling and recovery of waste, to demonstrate the movement away from disposal.
Waterways for Tomorrow, (DEFRA – 2000)	Key objective to promote of waterways, encouraging their use and development.	Maximise the opportunities the waterways offer for leisure and recreation; as a catalyst for urban and rural regeneration and for freight transport.  Encourage the innovative use of waterways such as water transfer and telecommunication.	Useful in context of regeneration master plans, as well as plan policies for regeneration, leisure and recreation, tourism, heritage and culture, natural environment and transport.	Assess opportunities to include promotion of waterways in the SA framework.
Working with the Grain of Nature: A Biodiversity Strategy for England, (DEFRA – 2002)	The Strategy builds on the Biodiversity Action Plan, 1994 and aims to embed biodiversity in policy and decisions and society as a whole. It addresses the following issues; <ol style="list-style-type: none"> <li>Agriculture – encouraging the management of farmland and agricultural land so as to conserve and enhance biodiversity;</li> <li>Water – whole catchment approach to wise, sustainable use of water and wetlands;</li> <li>Woodland – management and extension of woodland to promote enhance biodiversity and quality of life;</li> <li>Marine and Coastal Management – to achieve</li> </ol>	Strategy aim to provide biodiversity considerations are embedded in all sections of public policy.  Sets out key species for concern in different environments.  Aims to bring 95% of SSSI's into favorable condition by 2010  Aims to reverse the decline of farmland birds.	Inclusion of policies to preserve wildlife habitats.	Consideration of direct and indirect impacts of plan policies on the natural environment.

PPP	Key objectives relevant to DPD and SPD and SA	Key targets and indicators relevant to DPD, SPD and SA	Implications for the DPD and SPD	Implications for SA
	<p>sustainable use and management of coasts and seas using natural processes and eco-system based approaches; and</p> <p>5. Urban areas – biodiversity needs to become part of development policy on sustainable communities, urban green space and the built environment.</p>			
<p>Air Quality Strategy for the UK. Working together for clean air, (DETR - Jan 2000)</p>	<p>Aims to improve and protect ambient air quality in the UK in the medium-term.</p> <p>Sets objectives for 8 main air pollutants to protect health. Performance against these objectives will be regularly monitored.</p>	<p>Contains a number of national air quality targets that were updated by DEFRA in Aug 2002.</p>	<p>Consider use of policies to improve Air Quality.</p>	<p>Consideration of direct and indirect impacts of plan policies on air quality.</p>
<p>Energy White Paper: meeting the energy challenge 2007</p>	<p>The Energy White Paper sets out the Government's international and domestic energy strategy to respond to changing circumstances and address the long term energy challenges faced now and in the future including;</p> <ul style="list-style-type: none"> <li>• tackling climate change by reducing carbon dioxide emissions both within the UK and abroad; and</li> <li>• Ensuring secure, clean and affordable energy as we become increasingly dependent on imported fuel.</li> </ul>	<p>The paper sets four policy goals;</p> <ul style="list-style-type: none"> <li>• To put ourselves on a path to cutting CO2 emissions by some 60% by about 2050, with real progress by 2020;</li> <li>• To maintain the reliability of energy supplies;</li> <li>• To promote competitive markets in the UK and beyond; and,</li> <li>• To ensure that every home is adequately and affordably heated.</li> </ul>	<p>DPD and SPD need to include energy strategy.</p>	<p>The SA needs to take account of the long term aspirations and targets. Energy indicators should be included in the SA Framework</p>
<p>Making Space for Water: Taking Forward a Government Strategy for Flood and Coastal Erosion Risk Management in England. First Government Response, DEFRA March</p>	<p>The government is trying to implement a more holistic approach to managing flood and coastal erosion. It takes into account all sources of flooding, embedding flood and coastal risk management across a range of government policies and reflecting other relevant government policies in policies and operations of flood and coastal erosion risk management.</p> <p>It aims to manage risks by employing an integrated portfolio of approaches which reflect both national and local priorities to:</p> <ol style="list-style-type: none"> <li>1. Reduce threat to people and their property;</li> <li>2. Deliver the greatest environmental, social and</li> </ol>	<ul style="list-style-type: none"> <li>• Progress stakeholder engagement at all levels of decision making;</li> <li>• Revise risk management and scheme appraisal guidance;</li> <li>• Complete revision of PPG25 into PSS format;</li> <li>• Add flood risk assessment question into Standard Planning Application;</li> <li>• Make Environment Agency a Statutory Consultee;</li> <li>• Incorporate sustainable buildings code;</li> <li>• Increase the use of multi-objective schemes in rural areas; and</li> <li>• Undertake pilot studies for integrated urban</li> </ul>	<p>Flood risk assessment will become a more important part of planning policies. There will be increased emphasis on integrated systems and multi-objective schemes.</p>	<p>Implementation of sustainable building codes Integration of schemes.</p>

PPP	Key objectives relevant to DPD and SPD and SA	Key targets and indicators relevant to DPD, SPD and SA	Implications for the DPD and SPD	Implications for SA
2005	economic benefit consistent with government sustainable development principles.	drainage.		
PPS1 Delivering Sustainable Development (ODPM –2005)	Sustainable development is identified as the key principle underlying planning. Planning is charged with addressing sustainable development through: <ul style="list-style-type: none"> <li>• Making suitable land available for development in line with economic, social and environmental objectives to improve people's quality of life;</li> <li>• Contributing to sustainable economic development;</li> <li>• Protecting and enhancing the natural and historic environment, the quality and character of the countryside, and existing communities;</li> <li>• Ensuring high quality development through good and inclusive design, and the efficient use of resources; and,</li> <li>• Ensuring that development supports existing communities and contributes to the creation of safe, sustainable, livable and mixed communities with good access to jobs and key services for all members of the community.</li> </ul>	No specific target.	Key policy context.  More effective community involvement is a key element of the Government's planning reforms.	Check that the government's aims for sustainable development are reflected in the sustainability appraisal framework.
PPG2 Green Belts (ODPM –1995)	The fundamental aim of Green Belt policy is to prevent urban sprawl by keeping land permanently open. The purposes of Green Belts include: <ul style="list-style-type: none"> <li>• To check the unrestricted sprawl of large built-up areas;</li> <li>• To prevent neighbouring towns from merging into one another;</li> <li>• To assist in safeguarding the countryside from encroachment; and</li> <li>• To assist in urban regeneration, by encouraging the recycling of derelict and other urban land.</li> </ul>	No specific target.	Key policy context.	Consider in SA.
PPS 3 Housing, (ODPM-2000)	Underpins the delivery of the Government's strategic housing policy objectives to ensure that everyone has the opportunity to live in a decent home, which they can afford in a community where they want to live.	Regional planning bodies and local planning authorities should aim to meet the Government's objectives in regional spatial strategies and local development documents, and through individual planning decisions.	Check that the requirements of national planning guidance are reflected in the DPD and SPD.	Sustainability appraisal should inform plan policies in order to ensure that housing is distributed and located in a way which

PPP	Key objectives relevant to DPD and SPD and SA	Key targets and indicators relevant to DPD, SPD and SA	Implications for the DPD and SPD	Implications for SA
				contributes to sustainable development.
<p>PPG 4: Industrial, Commercial Development and Small Firms (ODPM –1992)</p>	<p>One of the Government's key aims is to encourage continued economic development in a way which is compatible with its stated environmental objectives.</p> <p>Requires that development plans contain clear land-use and locational policies for different types of industrial and commercial development and positive policies to provide for the needs of small businesses.</p> <p>Mixed uses are encouraged where appropriate in scale of development, the nature of the use of the site and location.</p>	<p>No specific target.</p>	<p>Through the DPD and SPD planning authorities should ensure that there is sufficient land available which is readily capable of development and well served by infrastructure. They should also ensure that there is a variety of sites available to meet differing needs.</p> <p>The DPD and SPD should identify areas of under-used or vacant urban land and indicate their appropriate alternative uses, including industrial and commercial uses.</p>	<p>The SA must balance the importance of industrial and commercial development with that of maintaining and improving environmental quality.</p>
<p>PPS 6 Planning for Town Centers, (ODPM –2005)</p>	<p>The government's key objectives for town centres is to promote their vitality and viability by planning for growth and development of existing centres and promoting and enhancing existing centres by focusing development in such centres and encouraging a wide range of services in a good environment, accessible to all.</p> <p>The main town centre uses are; retail, leisure and entertainment, offices, arts, culture and tourism. Housing will also be important as an element of mixed use schemes.</p>	<p>A sequential test must be applied to any proposals to develop main town centre uses outside of existing town centre designations.</p>	<p>The DPD and SPD should implement the government's objectives by:</p> <ul style="list-style-type: none"> <li>• Developing a hierarchy and network of centres;</li> <li>• Assess the need for further main town centre uses and ensure there is capacity to accommodate them;</li> <li>• focus development in existing centres and identify appropriate sites for development; and</li> </ul>	<p>Check that the requirements of national planning guidance are reflected in the sustainability appraisal framework.</p>

PPP	Key objectives relevant to DPD and SPD and SA	Key targets and indicators relevant to DPD, SPD and SA	Implications for the DPD and SPD	Implications for SA
			<ul style="list-style-type: none"> <li>Promote town centre management.</li> </ul>	
<p>PPS7 Sustainable Development in Rural Areas, (ODPM –2004)</p>	<p>Key national objectives:</p> <ul style="list-style-type: none"> <li>To raise the quality of life and the environment in rural areas through the promotion of:</li> <li>Thriving, inclusive and sustainable rural communities;</li> <li>Sustainable economic growth and diversification;</li> <li>Good quality, sustainable development that respects local distinctiveness and the intrinsic qualities of the countryside;</li> <li>A high level of protection for our most valued landscapes and environmental resources.</li> <li>To promote more sustainable patterns of development and support an urban renaissance;</li> <li>To make sustainable improvements in the economic performance of all English regions and, over the long term, reduce the persistent gap in growth rates within and between the regions; and</li> <li>To promote sustainable, diverse and adaptable agriculture sectors.</li> </ul>	<p>No specific targets.</p>	<p>Develop plan policies in line with national planning guidance on Sustainable Development in Rural Areas.</p>	<p>Check that the requirements of national planning guidance are reflected in the sustainability appraisal framework.</p>
<p>PPG 8 Telecommunications (ODPM -2001)</p>	<p>Overall objective is to facilitate the growth of new communications systems in order to provide people with a wider choice, while protecting human health and keeping environmental impact to a minimum.</p>	<p>No specific targets.</p>	<p>Plan policies should consider the location of new communication systems.</p>	<p>Check that the requirements of national planning guidance are reflected in the sustainability appraisal framework.</p>
<p>PPS 9 Biodiversity and Geological Conservation, (ODPM –2005)</p>	<p>The Government's objectives for conserving and enhancing biological diversity are to promote sustainable development, conserve, enhance and restore the diversity of England's wildlife and geology and contribute to rural renewal and urban renaissance by enhancing biodiversity in green spaces and ensuring that developments take account of the role and value of biodiversity.</p>	<p>No specific targets.</p>	<p>Consider impact of any development on designate protected sites, species and areas of nature conservation interest. Local plans should identify relevant international, national and local nature</p>	<p>Check that the requirements of national planning guidance are reflected in the sustainability appraisal framework. Ensure that biological and geological diversity are conserved and enhanced as an integral</p>

PPP	Key objectives relevant to DPD and SPD and SA	Key targets and indicators relevant to DPD, SPD and SA	Implications for the DPD and SPD	Implications for SA
			conservation interests. They should ensure that the protection and enhancement of those interests is properly provided for in development and land-use policies.	part of social, environmental and economic development.
PPS 10 Planning for Sustainable Waste Management, (ODPM –2005)	The overall government policy on waste is to protect human health and the environment by producing less waste and by using it as a resource wherever possible. The government aims to break the link between economic growth and the environmental impact of waste.	Guidance on sustainable waste management, and criteria for siting facilities.	Plan policies on waste management facilities will have to adhere to these guidelines. Strategic Environmental Assessment required under regulation 16 of the Environmental Assessment of Plans and Programmes Regulations 2004.	Requirements of national planning guidance should be reflected in SA framework.
PPS11 Renewable spatial development	Sets out the procedural policy on the nature of Regional Spatial Strategies (RSSs) and focuses on what should happen in preparing revisions to them and explains how this relates to the Act and associated regulations.	No specific targets.	Utilise the RSS as defined in the strategy.	SA framework to ensure that RSS has contributed appropriately to the DPD and SPD.
PPS12 Local Development Frameworks	Sets out the Government's policy on the preparation of local development documents which will comprise the local development framework.	Details the policy for the preparation of documents that contribute to the LDD.	Must be complied in order to comply with policies to enable inclusion in the LDF.	SA framework to ensure suitability for the LDF.
PPG13 Transport, (ODPM –2001)	Develop plan policies in line with national planning guidance on transport, which states that when preparing development plans local authorities should: <ol style="list-style-type: none"> <li>1. Manage pattern of urban growth to make fullest use of public transport and focus generators of travel demand in city, town and district centres and near to public transport interchanges;</li> <li>2. Locate day to day usage facilities in local centres so that they are accessible by walking and cycling;</li> <li>3. Accommodate housing principally within</li> </ol>	No specific targets.	Develop plan policies in line with national planning guidance on transport.	Check that the requirements of national planning guidance are reflected in the sustainability appraisal framework.

PPP	Key objectives relevant to DPD and SPD and SA	Key targets and indicators relevant to DPD, SPD and SA	Implications for the DPD and SPD	Implications for SA
	<p>existing urban areas, planning for increased development for housing and other uses at locations which are accessible by public transport, walking, etc</p> <ol style="list-style-type: none"> <li>4. Ensure development comprising jobs, shopping, leisure and services offers a realistic choice of access by public transport, etc. recognising this may be less achievable in some rural areas;</li> <li>5. In rural areas, locate most development for housing, jobs, shopping, leisure and services in local service centres which are designated in the development plan to act as focal points for housing, transport and other services. Encourage better transport provision in the countryside;</li> <li>6. Ensure strategies in the development and local transport plan complement each other. Consider linkage of development plan allocations and local transport investment and priorities;</li> <li>7. Use parking policies, alongside other planning and transport measures, to promote sustainable transport choices and reduce reliance on the car for work and other journeys;</li> <li>8. Give priority to people over ease of traffic movement and plan to provide more road space to pedestrians, cyclists and public transport in town centres, local neighborhoods and other areas with a mixture of land uses;</li> <li>9. Ensure that the needs of disabled people as pedestrians, public transport users and motorists are taken into account in the implementation of planning policies, traffic management schemes and the design of individual developments; consider how best to reduce crime and the fear of crime, and seek by the design and layout of developments and areas, to secure community safety and road safety; and</li> <li>10. Protect sites and routes which could be critical in developing infrastructure to widen transport choices for both passenger and freight</li> </ol>			

PPP	Key objectives relevant to DPD and SPD and SA	Key targets and indicators relevant to DPD, SPD and SA	Implications for the DPD and SPD	Implications for SA
	movements.			
PPG 14 Development on unstable land	Sets out the broad planning and technical issues to be addressed in respect of development on unstable land.	No specific targets set.	Must incorporate guidance to works as appropriate.	SA must ensure full alignment with guidance where applicable.
PPG 15 Planning and The Historic Environment, (ODPM –1994)	National policy outlines the role of the planning system in the protection of historic buildings, conservation areas, and other elements of the historic environment, by regulating the development and use of land whilst reconciling the need for economic growth with the need to protect the natural and historic environment.	No specific targets.	Plan policies should seek to protect historic environment.	Requirements of national planning guidance should be reflected in SA framework.
PPG 16 Archaeology and Planning, (ODPM –1990)	National guidance states that where nationally important archaeological remains, whether scheduled or not, and their settings, are affected by proposed development there should be a presumption in favour of their physical preservation. Cases involving archaeological remains of lesser importance will not always be so clear cut and planning authorities will need to weigh the relative importance of archaeology against other factors including the need for the proposed development	No specific targets.	Plan policies should seek to protect archaeological remains.	Requirements of national planning guidance should be reflected in SA framework.

PPP	Key objectives relevant to DPD and SPD and SA	Key targets and indicators relevant to DPD, SPD and SA	Implications for the DPD and SPD	Implications for SA
PPG17 Planning for Open Space, Sport and Recreation, (ODPM –2002)	<p>Government objectives for open space, sport and recreation are as follows:</p> <ol style="list-style-type: none"> <li>1. Supporting an urban renaissance – creating local networks of high quality and well managed and maintained open spaces, sports and recreational facilities;</li> <li>2. Supporting a rural renewal - the countryside can provide opportunities for recreation and visitors can play an important role in the regeneration of the economies of rural areas;</li> <li>3. Promotion of social inclusion and community cohesion - well planned and maintained open spaces and recreational facilities can improve people's sense of well being in the place they live and act as a focal point for community activities;</li> <li>4. Health and well being - open spaces, sports and recreational facilities have a vital role to play in promoting healthy living and preventing illness, and in the social development of children of all ages; and</li> <li>5. Promoting more sustainable development - by ensuring that open space, sports and recreational facilities are easily accessible by walking and cycling and that more heavily used sports and recreational facilities are well served by public transport.</li> </ol>	No specific targets.	<p>Develop plan policies in line with national planning guidance open space, sport and recreation.</p> <p>Consider the baseline for the quantity and quality of open space and range of types of open space and include relevant policies to ensure open spaces are attractive and accessible to all.</p>	<p>Check that the requirements of national planning guidance are reflected in the sustainability appraisal framework.</p> <p>Consider sustainability objectives that aim to improve the amount and quality of open space in the city.</p>
PPG19 Outdoor advertisement control	Explains that the main purpose of the advertisement control system is to help those involved in outdoor advertising to contribute positively to the appearance of an attractive environment in cities, towns and the countryside.	No specific targets.	Plan policies should seek to follow guidance.	Requirements of national planning guidance should be reflected in SA framework.
PPG20 Coastal Planning	Guidance covers the character of the coast, designated areas, heritage coasts and the international dimension. It discusses types of coasts, policies for their conservation and development and policies covering risks of flooding, erosion and land instability, as well as coastal protection and defence. It outlines policies for developments which may specifically require a coastal location, including tourism, recreation,	No specific targets.	Plan policies should seek follow guidance.	Requirements of national planning guidance should be reflected in SA framework.

PPP	Key objectives relevant to DPD and SPD and SA	Key targets and indicators relevant to DPD, SPD and SA	Implications for the DPD and SPD	Implications for SA
	mineral extraction, energy generation and waste water and sewage treatment plant.			
PPS 22 Renewable Energy - 2004	<p>The government's policy on renewable energy will contribute to sustainable development objectives by ensuring:</p> <ol style="list-style-type: none"> <li>1. Social progress which recognises the needs of everyone;</li> <li>2. Effective protection of the environment;</li> <li>3. Prudent use of natural resources; and</li> <li>4. Maintenance of high and stable levels of economic growth and employment.</li> </ol> <p>Government objectives in relation to renewable energy are set out in full in the Energy White Paper.</p>	The Government has set a target to generate 10% of UK electricity from renewable energy sources by 2010 and 20% by 2020.	<p>Develop plan policies in line with national planning guidance on Renewable energy.</p> <p>Consider how the DPDs and SPDs can contribute to national targets.</p> <p>Plan policies should promote energy efficiency.</p> <p>Policies should promote the use of renewable energy and may include a certain percentage of energy in new developments to come from on-site renewable energy schemes.</p>	Consider sustainability objectives that aim to increase the proportion of energy generated from renewable energy sources.
PPS 23: Planning and Pollution Control – 2004	<p>In accordance with national policies, the Government expects LPAs to adopt a strategic approach to integrate their land use planning processes with plans and strategies for the control, mitigation and removal of pollution, as far as it is possible and practicable to do so. The overall aim of planning and pollution control policy is to ensure the sustainable and beneficial use of land (and in particular encouraging reuse of previously developed land in preference to greenfield sites). Within this aim, polluting activities that are necessary for society and the economy should be so sited and planned, and subject to such planning conditions, that their adverse effects are minimised and contained to within acceptable limits.</p> <p>Opportunities should be taken wherever possible to use the development process to assist and</p>	No specific targets.	Plan policies will need to take account of national guidance in terms of decisions on specific developments, and broad spatial policy in terms of minimizing pollution levels.	Requirements of national planning guidance should be reflected in SA framework. This is particularly important for transport assessments.

PPP	Key objectives relevant to DPD and SPD and SA	Key targets and indicators relevant to DPD, SPD and SA	Implications for the DPD and SPD	Implications for SA
	encourage the remediation of land already affected by contamination.			
PPG 24 Planning and Noise - 1994	The planning system should ensure that, wherever practicable, noise-sensitive developments are separated from major sources of noise (such as road, rail and air transport and certain types of industrial development). It is equally important that new development involving noisy activities should, if possible, be sited away from noise-sensitive land uses. Where it is not possible to achieve such a separation of land uses, local planning authorities should consider whether it is practicable to control or reduce noise levels, or to mitigate the impact of noise.	No specific targets.	Develop plan policies in line with national planning guidance on planning and noise. Plan policies should protect noise-sensitive land uses. The Secretary of State considers that housing, hospitals, schools and areas which have remained relatively undisturbed by noise nuisance, and are prized for their recreational and amenity value for this reason, should generally be regarded as noise-sensitive development.	Requirements of national planning guidance should be reflected in SA framework.
PPS25 Development and Flood Risk (ODPM –2006)	Planning Policy Statement 25 (PPS25) sets out Government policy on development and flood risk. It's aims are to ensure that flood risk is taken into account at all stages in the planning process to avoid inappropriate development in areas at risk of flooding, and to direct development away from areas of highest risk. Where new development is, exceptionally, necessary in such areas, policy aims to make it safe, without increasing flood risk elsewhere, and, where possible, reducing flood risk overall.	No specific targets.	Will impact particularly on criteria based policies and site allocations in relation to assessed flood risk.	Check that the requirements of national planning guidance are reflected in the sustainability appraisal framework.
<b>Regional</b>				
A Better Quality of Life from the South East: The Regional	The framework details the sustainable development objectives for the south East:  1. To ensure that everyone has the opportunity of a decent and affordable home;	The Framework details the sustainable development indicators along with directional targets.	DPD and SPD should observe and comply with the frameworks sustainable objectives.	The SA should ensure that the DPD and SPD will contribute to the sustainable development indicators

PPP	Key objectives relevant to DPD and SPD and SA	Key targets and indicators relevant to DPD, SPD and SA	Implications for the DPD and SPD	Implications for SA
Sustainability Framework	<ol style="list-style-type: none"> <li>2. To improve the health and well-being of the population and reduce inequalities;</li> <li>3. To reduce poverty and social exclusion and close the gap between the most disadvantaged communities and the rest;</li> <li>4. To stimulate economic revival in priority regeneration areas;</li> <li>5. To raise educational and achievement levels across the Region and develop opportunities for everyone to acquire the skill needed to find and remain in work;</li> <li>6. To reduce crime and the fear of crime;</li> <li>7. To create and sustain vibrant communities;</li> <li>8. To encourage the development of, and participation in, culture, sports and the arts;</li> <li>9. To improve efficiency in land use, through the re-use of previously developed land and existing buildings, and encourage urban renaissance;</li> <li>10. To reduce air pollution and ensure air quality continues to improve;</li> <li>11. To maintain and improve the water quality of the Region's rivers and coast;</li> <li>12. To address the causes of climate change through reducing emissions of greenhouse gases;</li> <li>13. To conserve and enhance the region's biodiversity</li> <li>14. To protect, enhance and encourage enjoyment of the countryside;</li> <li>15. To reduce road traffic and congestion through reducing the need to travel by car and improving travel choice</li> <li>16. To maintain, enhance and make accessible the historic environment and assets of the region</li> <li>17. To achieve sustainable waster resources management</li> <li>18. To reduce the risk of flooding that would be detrimental to public well-being, the economy and the environment</li> <li>19. To reduce waste generation and disposal, and achieve the sustainable management of waste</li> <li>20. To increase energy efficiency</li> </ol>			<p>in a positive direction.</p> <p>Key regional context</p>

PPP	Key objectives relevant to DPD and SPD and SA	Key targets and indicators relevant to DPD, SPD and SA	Implications for the DPD and SPD	Implications for SA
	21. To increase the proportion of energy generated and consumed in the region from Renewable source 22. To ensure high and stable levels of employment so everyone can benefit from the economic growth of the region 23. To sustain economic growth and competitiveness, and ensure a better distribution of economic activity across the Region 24. To invest to secure our future prosperity and quality of life 25. To develop the knowledge economy by focusing on higher value, low impact activities.			
South East Regional Housing Strategy 2006 onwards	Aims for everyone in the South East to live in a decent home. To achieve this aims to:  1. Encourage the building of more homes, with an increase in the proportion of social rented housing; 2. Make decent all social housing stock by 2010; and 3. Improve the quality of private sector housing focusing on the worst location vulnerable households with children.	The strategy sets out priorities, criteria, targets and actions to meet the strategic themes.  Targets include: <ul style="list-style-type: none"> <li>• To fund 20% affordable housing in the South East's three designated growth areas: Milton Keynes &amp; Aylesbury Vale, Ashford and Thames Gateway;</li> <li>• Funding for new affordable housing in small villages with populations of less than 3,000 at the same levels as in 2004-05 and 2005-06 (720 units across the two years);</li> <li>• schemes of more than 200 units should be referred to design review at an early stage of development; and</li> <li>• all homes funded by the Board must meet the 'very good' EcoHomes environmental sustainability rating</li> </ul>	The DPD and SPD should observe and comply with the strategy.	The SA should ensure that the DPD and SPD are in-line and contribute towards the strategy and the key targets
'No time to waste' - South East Regional Waste Management Strategy March 2004	The volume of waste in the South East region is growing at over 3% per annum, currently producing over 25 million tonnes of waste per annum. The main policy themes are:  1. Waste minimization; 2. Recycling and composting; 3. Other recovery and diversion from landfill;	Policy targets include reducing the growth of all waste to 1% per annum by 2010 and 0.5% per annum by 2020.  Achieve targets for improving waste recovery, recycling, composting, provide for continuing but declining landfill capacity.	Waste management strategy to be incorporated into the waste policies of the DPD and SPD.	SA will include indicator on minimization of waste. Will also need indicators on re-use, recycling and recovery of waste as well, to demonstrate the movement away from

PPP	Key objectives relevant to DPD and SPD and SA	Key targets and indicators relevant to DPD, SPD and SA	Implications for the DPD and SPD	Implications for SA
	<p>4. Landfill;</p> <p>5. Self-sufficiency;</p> <p>6. Market development and advocacy; and</p> <p>7. Inter-regional links.</p>			disposal.
<p>Minerals Strategy</p> <p>Proposed Alterations to Regional Planning Guidance, South East – Regional</p>	<p>The Regional Minerals Strategy sets out a regional framework up to 2016 for the development of minerals such as chalk, clay, sand and gravel; raw materials which are important for both the manufacturing and construction industry by:</p> <ol style="list-style-type: none"> <li>1. Encourage the development and construction of sustainable construction practise;</li> <li>2. Effective management of mineral extraction;</li> <li>3. The need and use of primary aggregates should be reduced;</li> <li>4. Advocated the need to adopt long-term statutory recycling and recovery targets; and</li> <li>5. The supply of construction aggregates in the South East should be met from a significant increase in supplies of secondary and recycled materials. A reduced contribution from primary land-won resources and an increase in imports of marine-dredges aggregates</li> </ol>	<p>Development plans should:</p> <ul style="list-style-type: none"> <li>• Encourage development projects to use construction materials that reduce the demand for primary minerals wherever practical.</li> <li>• Promote a model shift to increase the proportion of minerals and derived manufactured products transported into and with the region by rail/or air</li> </ul>	The mineral strategy to be incorporated into the policies of the DPD and SPD.	Minerals strategy to be cross reference with transport and waste management objectives as part of SA indicators.
The South East Plan - Regional Spatial Strategy	<p>Sets out a framework for the region's development for the next 20 years, to 2026. It complements other regional strategies, such as those for economic development and public housing investment and, by including an Implementation Plan, has a strong focus on delivery.</p> <p>The Plan's core objectives are to balance continuing economic and housing growth with rising standards of environmental management and reduced levels of social exclusion and natural Resource consumption.</p>	<p>Numerous targets are given across the different policy's relating to:</p> <ul style="list-style-type: none"> <li>• Sustainable development;</li> <li>• Climate Change;</li> <li>• Resource use;</li> <li>• Sustainable construction;</li> <li>• Infrastructure;</li> <li>• The use of public land;</li> <li>• Inter regional links;</li> <li>• Urban focus and renaissance;</li> <li>• Addressing inter regional disparities;</li> <li>• Green belt and strategic belts;</li> <li>• Supporting an ageing population;</li> <li>• Character and quality of life; and</li> <li>• Housing supply</li> </ul>	DPD and SPD must demonstrate conformity with RSS.	<p>The indicators and targets in the RSS are a usefully framework in forming the DPD and SPD and the SA baseline.</p> <p>Key regional context.</p>
Harnessing the Elements - South East	The objective of the policies is to promote a more sustainable pattern of energy use and generation while ensuring that development does not harm the	Numerous targets are given across the different policies.	The DPD and SPD should incorporate the energy and renewable	SA to include indicator on energy usage and use of renewable

PPP	Key objectives relevant to DPD and SPD and SA	Key targets and indicators relevant to DPD, SPD and SA	Implications for the DPD and SPD	Implications for SA
Energy Efficiency and Renewable Energy May 2003	<p>region's environment or the quality of life of its people by:</p> <ol style="list-style-type: none"> <li>1. Promoting measures that will conserve energy;</li> <li>2. Increase the use of renewable energy sources and support more local, small scale and dispersed pattern of generation;</li> <li>3. Encourage the incorporation of high standards of energy efficiency in all development;</li> <li>4. Development plans should include policies and proposals for the development of combined heat and power (CHP) schemes and encourage the integration into major development of CHP and district heating infrastructure;</li> <li>5. Setting minimal regional targets for electricity generation from renewable resources;</li> <li>6. Contributing to the achievement for the regional and sub-regional targets from land-based renewable energy; and</li> <li>7. Support developments that support the principle of renewable energy that has a minimal effect on landscape, wildlife and amenity.</li> </ol>		energy objectives of the policy.	energy.
'From crisis to cutting edge' Draft regional transport Strategy	The Regional Transport Strategy is the regional framework that will ensure that the investment programmes of local authorities, transport providers and other key stakeholders in the transport sector complement and support the wider regional objective of delivering a more sustainable pattern of development. This is achieved by 19 policy statements.	Local transport plans should develop innovative approaches to public transport in rural areas. Priority will be given to transport systems that support the delivery of the spatial strategy. Local transport plans should include plans and proposals to facilitate sustained economic growth, environmental enhancement and promote social inclusion.	The DPD and SPD should observe and comply with the strategy as well as linking to regional and national strategies.	The provision of transport systems and in particular the provision of public transport and alternatives should be included in the SA framework.

PPP	Key objectives relevant to DPD and SPD and SA	Key targets and indicators relevant to DPD, SPD and SA	Implications for the DPD and SPD	Implications for SA
<p>Destination South East – Tourism and related sport and recreation</p>	<p>The vision for tourism recognises the value of the industry to quality of life in the South East and contends that its contribution to the spatial development of the South East can be significantly enhanced for the good of the region.</p> <p>The Strategy sets out to deliver the following aims over the period to 2026:</p> <ol style="list-style-type: none"> <li>1. Emphasise the sub regional priorities ( Thames Gateway, The Coastal Strip, South Downs and New Forest Proposed, Milton Keynes and Ashford, Thames Valley, Oxford and western Oxfordshire);</li> <li>2. Seek opportunities to diversify the economic base of the region's costal resorts, while consolidating and upgrading tourism facilities in ways which promote higher value activity, reduce seasonality and support urban regeneration</li> <li>3. Seek opportunities to promotes tourism and recreation based rural diversification should be encouraged where they provide jobs for local residents and are of a scale and type appropriate to their location; and</li> <li>4. Opportunities should be sought to protect upgrade existing and develop new, regionally significant sporting facilities in the region in accordance with the facilities strategies produced by the national governing bodies for sport.</li> </ol>	<p>Numerous targets are given across the different policies.</p>	<p>DPD and SPD should prevent inappropriate development, co-ordinate management and environmental initiatives and Identify land for particular types of tourism related development. Also Identifying necessary infrastructure investments.</p>	<p>SA framework to reflect local plan objectives in setting indicators in the SA framework.</p>
<p>England Rural Development programme (South East Regional Chapter)</p>	<p>England Rural Development Plan in the South East: Regional Goals:</p> <ol style="list-style-type: none"> <li>1. Protect and enhance distinctive; landscapes, countryside character and historic environment;</li> <li>2. Safeguard and enhance the diversity of habitats and species of the region;</li> <li>3. Ensure appropriate management of woodland and water resources;</li> <li>4. Promote environmentally friendly farming;</li> <li>5. Exploit niche markets for high value products;</li> <li>6. Ensure economic activity is sustainable;</li> </ol>	<p>Identifies key areas for examination during development of the South East regions rural areas including plan and policy suggestions, good practice comments and strength, weakness, opportunities and threats analysis. Also provides broad regional rural objectives</p>	<p>Should consider objectives and incorporate as possible to align with regional objectives.</p>	<p>The overviews of rural elements are useful for framework targets. Aspirations, objectives to inform SA indicators.</p>

PPP	Key objectives relevant to DPD and SPD and SA	Key targets and indicators relevant to DPD, SPD and SA	Implications for the DPD and SPD	Implications for SA
	7. Develop collaborative marketing initiatives; 8. Encourage diversification of the rural economy and stimulate related activities; 9. Build on market opportunities to develop local employment that is accessible to all; 10. Improve provision of and accessibility of essential services; 11. Ensure that the skills of the workforce match existing and potential business opportunities; and 12. Promote understanding of the countryside and rural issues.			
Integrated regional Framework for the South East	The Integrated Regional Framework (IRF) establishes a shared regional vision and set of objectives, which organisations can use to achieve economic development that benefits people and protect and improves the environment. This is an update of the Regional Sustainable Development Framework (RSDF) published in June 2001.	Identifies 25 key objectives along with indicators and targets.	Ensure that documents are informed and contribute towards targets set.	Useful for setting SA indicators
A Framework For Economic Prosperity.  Regional Economic strategy 2006-2016	The Regional Economic Strategy adopts three objectives:  1. Global Competitiveness – assisting more businesses to operate internationally and maximising the South East's share of foreign direct investment; increasing the region's stock of businesses; maximising the number of people ready for employment at all skill levels, and ensuring they are equipped to progress in the labour market; 2. Smart Growth – lifting underperformance through; ensuring sufficient and affordable housing and employment space of the right type and size to meet the needs of the region; reducing road congestion and pollution levels by improving travel choice, promoting public transport; and 3. Sustainable Prosperity – supporting quality of life through reducing CO <sup>2</sup> emissions attributable to the South East and increasing the contribution of renewable energy to overall energy supply in the region; reducing per capita water consumption; achieving measurable	The Strategy adopts three headline targets:  <ul style="list-style-type: none"> <li>• Achieve an average annual increase in Gross Value Added per capita of at least 3%;</li> <li>• Increase productivity per worker by an average 2.4% annually, from £39,000 in 2005 to at least £50,000 by 2016; and</li> <li>• Reduce the rate of increase in the region's ecological footprint (from 6.3 global hectares per capita in 2003, currently increasing at 1.1% per capita per annum), stabilise it and seek to reduce it by 201</li> </ul>	The DPD and SPD should observe and comply with the strategy contributing to targets were possible.	Use economic proprieties to inform the SA indicators.

PPP	Key objectives relevant to DPD and SPD and SA	Key targets and indicators relevant to DPD, SPD and SA	Implications for the DPD and SPD	Implications for SA
	improvements in the quality, biodiversity and accessibility of green space, open space and green infrastructure; and enabling more people to benefit from sustainable prosperity across the region.			
Sustainable communities in the South East Building for the future.	Strategy consider the key challenges to sustainable communities in the South East under the keys themes;  1. Housing supply; 2. Affordability of housing; 3. Transport; 4. Skills and the labour market; 5. Tackling deprivation and renewing communities; and 6. Community engagement and partnership working.	Action plans to tackle key challenges consider the roles of local and regional planning documents and agencies.  No specific targets.	Must ensure that SPD and DPD contribute to the regional strategy of sustainable communities.	Cross reference key regional and local challenges to providing sustainable communities to inform suitable SA framework indicators.
<b>Sub Regional</b>				
Community Strategy- Vision for Kent (April 2006)	Strategy details how we will improve the economic, environmental and social wellbeing of the county of Kent over the next 20 years focusing on 9 themes  1. Economic success that is shared by all; 2. Learning for everyone; 3. Healthy lifestyles; 4. Modern social and health care services; 5. A better environment; 6. Communities that feel safe and are safe; 7. Kent Communities; 8. Keeping Kent moving; and 9. Enjoying life in Kent.	The strategy sets out priorities, criteria, targets and actions to meet the strategic themes.	The DPD and SPD should observe and comply with the strategy	The SA should ensure that the DPD and SPD are in-line and contribute towards the strategy and SA framework incorporates objectives as appropriate.

PPP	Key objectives relevant to DPD and SPD and SA	Key targets and indicators relevant to DPD, SPD and SA	Implications for the DPD and SPD	Implications for SA
<p>Local Transport Plan for Kent 2006-11</p>	<p>The LTP aims to provide a choice in the transport network and reduce dependency on the private car, thereby improving accessibility for the whole community and protecting the environment. In doing so 10 key objectives have been identified:</p> <ol style="list-style-type: none"> <li>1. Accessibility;</li> <li>2. Demand Management;</li> <li>3. Environment, Heritage and Communities;</li> <li>4. Health;</li> <li>5. Integration;</li> <li>6. Keep Kent Moving;</li> <li>7. Road Safety;</li> <li>8. Sustainable Regeneration;</li> <li>9. UK Connections; and</li> <li>10. UK Gateway.</li> </ol>	<p>The Kent LTP headline targets include:</p> <ul style="list-style-type: none"> <li>• A 10% increase (from 58%) by 2011 in the number of households within 30 minutes traveling time of a hospital by public transport;</li> <li>• A 5% increase (from 88.9%) by 2011 in the number of households within 15 minutes of a GP's surgery by public transport;</li> <li>• A reduction in average vehicle speeds on Kent's roads in residential areas by 10% by 2011;</li> <li>• A 2% increase per year in bus patronage on 2003/4 levels;</li> <li>• A 6% improvement in bus punctuality by 2011;</li> <li>• A 38% increase in cycling on 2003/4 levels by 2011;</li> <li>• Restraining Kent wide traffic growth to less than 2% per annum; and</li> <li>• A 10% increase in the use of sustainable transport modes for journeys to school by 2011.</li> </ul>	<p>DPD and SPD need to contribute to key targets of the LTP.</p>	<p>Ensure the DPD and SPD are aligned with the LTP and objectives are reflected in the SA Framework.</p>

PPP	Key objectives relevant to DPD and SPD and SA	Key targets and indicators relevant to DPD, SPD and SA	Implications for the DPD and SPD	Implications for SA
<p>Learning for life, improvement for all. Education Development Plan 2002 - 2007 (Year 2004-05 Update)</p>	<p>“Learning for Life- Improvement for All” identifies that ‘Education, skills and learning are the key to personal success an fulfilment, and to the future prosperity and quality of life in Kent’. The commitments are:</p> <ol style="list-style-type: none"> <li>1. To attract, support and reward the very best teachers;</li> <li>2. To help all schools to improve performance but target those few which are not fully developing children’s abilities;</li> <li>3. Early years provision is essential and to develop the social skills of children and give them the best start to education;</li> <li>4. Secondary schools should work together to provide the maximum degree of choice for young people in their area, ensuring all students have access to a curriculum that is best suited to their needs;</li> <li>5. To ensure that every child is supported to fulfil his or her potential;</li> <li>6. To help schools to become centres for their communities; and</li> <li>7. To create responsive structures to tackle underachievement and extend the potential of all pupils.</li> </ol>	<p>The development plan sets out priorities, criteria, targets and actions to meet the strategic themes.</p>	<p>The DPD and SPD should observe and comply with the strategy</p>	<p>The SA should ensure that the DPD and SPD are in-line and contribute towards the strategy</p>

PPP	Key objectives relevant to DPD and SPD and SA	Key targets and indicators relevant to DPD, SPD and SA	Implications for the DPD and SPD	Implications for SA
Kent County Council Equality Strategy April 2007 – March 2010	<p>The Strategy sets out how the Council will promote equality and community cohesion and tackle unfair discrimination in Kent incorporating the Council's Disability, Gender and Race equality schemes., The strategy focuses primarily on five priority outcomes:</p> <ol style="list-style-type: none"> <li>1. Equal and inclusive services and information for all, regardless of age, disability, gender, faith, race or sexual orientation;</li> <li>2. Creative opportunities for participation and involvement in service planning and decision-making;</li> <li>3. Work with our partners to ensure the county's most vulnerable groups feel safe and free from harassment;</li> <li>4. Enhance the quality of our intelligence and monitoring systems, to ensure we can target disadvantage in the county where action is most needed; and</li> <li>5. Maintain our reputation as an excellent employer.</li> </ol>	Equality impact assessments to be incorporated as part of the DPD and SPD.	The DPD and SPD should observe and comply with the strategy.	The SA should ensure that the DPD and SPD promote the outcomes of the Strategy and incorporate Equality impact assessments as appropriate.
Kent Joint Municipal Waste Management Strategy	<p>The purpose of the Strategy is to set out how the KWP intends to manage municipal solid waste arising over the next 20 years focusing on:</p> <ol style="list-style-type: none"> <li>1. Strategy Objectives and Policies;</li> <li>2. Resource Management;</li> <li>3. Partnerships;</li> <li>4. Education and Engagement;</li> <li>5. Waste Minimisation and Re-use;</li> <li>6. Recycling and Composting;</li> <li>7. Residual Waste Management Services;</li> <li>8. Energy Recovery;</li> <li>9. Disposal to Landfill; and</li> <li>10. Waste transfer Facilities.</li> </ol>	No specific targets.	Waste management strategy to be incorporated into the waste policies of the DPD and SPD.	SA will include indicator on minimization of waste. Will also need indicators on re-use, recycling and recovery of waste as well, to demonstrate the movement away from disposal.

PPP	Key objectives relevant to DPD and SPD and SA	Key targets and indicators relevant to DPD, SPD and SA	Implications for the DPD and SPD	Implications for SA
The Kent Environment Strategy and Progress Reports	<p>The Kent Environment Strategy has been developed to present the environmental issues affecting the whole county, bringing together a collective response in a single document. It identifies Key challenges:</p> <ol style="list-style-type: none"> <li>1. Climate change;</li> <li>2. Changing rural economy;</li> <li>3. Global markets;</li> <li>4. Transport and traffic;</li> <li>5. Development pressure; and</li> <li>6. Environmental pollution</li> </ol>	No specific targets.	The DPD and SPD should take in to account the challenges of strategy.	The DPD and SPD should take in to account the challenges of strategy.
The Kent Biodiversity Action Plan	The aim of the action plan is to conserve and enhance biological diversity in Kent and to contribute to the conservation of national and global biodiversity.	<p>To maintain and, where practicable, to enhance:</p> <ul style="list-style-type: none"> <li>• the overall populations and natural ranges of native species and the quality and range of wildlife habitats and ecosystems;</li> <li>• internationally and nationally important and threatened species, habitats and ecosystems;</li> <li>• Species, habitats and natural and managed ecosystems that are characteristic of Kent;</li> <li>• The biodiversity of natural and semi-natural habitats, where this has diminished over 3 recent decades.</li> </ul> <p>To increase public awareness of, and involvement in, conserving biodiversity.</p> <p>To identify priorities for habitat and species conservation in Kent and set realistic targets and timescales for these.</p>	Ensure that SPD and DPD aligns with BAP	Ensure that DPD and SPD encourage conservation and offer protection to areas and species of high conservation importance as identified in the action plan.

PPP	Key objectives relevant to DPD and SPD and SA	Key targets and indicators relevant to DPD, SPD and SA	Implications for the DPD and SPD	Implications for SA
Kent County Council School Organisation Plan December 2004	The School Organisation Plan (SOP) is a statutory plan, the key purpose of which is to set out how Kent County Council as Local Education Authority intends to meet its statutory responsibility to secure sufficient education provision within its area in order to promote higher standards of attainment.	<ul style="list-style-type: none"> <li>The Education Development Plan for Key Stages 1,2,3 and 4 (school age children) on attainment in English, Mathematics, Science, ICT and across the curriculum;</li> <li>Increasing participation in learning by young people and adults;</li> <li>Achievement of basic skills and Level 2, 3 and 4 qualifications;</li> <li>93.6% of 16 year-olds achieving five or more GCSE A*-G) passes by summer 2003 (also PSA target); and</li> <li>65% of children looked after by KCC gaining at least one GCSE.</li> </ul>	Must contribute to the national and regional plans and policies towards education.	Useful for establishing SA baseline and education indicators.
Kent economic report- A review of the local economy and its Social and Environmental Context 2004	The 'Kent Economic Report 2004' to provide a snapshot of how the economy of Kent is performing against regional and national benchmarks. The report also provides additional contextual information on social and environmental indicators to provide an overview of the "economy – society – environment" aspects of sustainable development.	No specific targets set.	Provide regional benchmarks for economic development.	Useful for establishing SA baseline for economic indicators.
CAMS Stour catchments	To manage water resources in a sustainable way by providing a structured approach to water resources management in the Stour Catchment. It recognises the needs of abstractors, river users and the environment.	<p>Maintain and improve river quality and water resources.</p> <p>Improve and protect the natural environment (including biodiversity).</p>	Ensure suitable measures are taken to protect the aquatic environment from pollution and over abstraction.	SA to include indicators on the impact DPD and SPD could have on the aquatic environments (coastal and inland).
Thanet District Council Transport plan 2005-2011	<p>Key Strategic Themes:</p> <ol style="list-style-type: none"> <li>Maintaining and improving community safety;</li> <li>Improving health and social welfare;</li> <li>Rejuvenating the city's economy;</li> <li>Protecting and enhancing the environment;</li> <li>Enhancing image and raising aspirations;</li> <li>Creating a learning city;</li> <li>Reinvigorating the housing market; and</li> <li>Improving transport.</li> </ol>	Detailed objectives, baselines and actions are provided in this strategy, covering the key strategic themes indicated.	Ensure that SPD and DPD aligns with transport plan.	<p>The SA should inform the evolving objectives of the transport plan.</p> <p>Must also consider the targets and objectives set in subsequent documents and policies.</p>

PPP	Key objectives relevant to DPD and SPD and SA	Key targets and indicators relevant to DPD, SPD and SA	Implications for the DPD and SPD	Implications for SA
<p>Thanet District Adopted Local Plan 2006</p>	<p>The Local Plan identifies the issues and opportunities that are arising in the area and sets out the Council's views on how they would like to see the area develop over a period of time covering the key areas of:</p> <ol style="list-style-type: none"> <li>1. Economic Development &amp; Regeneration;</li> <li>2. Housing;</li> <li>3. Town Centres &amp; Retailing;</li> <li>4. Transportation;</li> <li>5. Design;</li> <li>6. Heritage;</li> <li>7. Tourism;</li> <li>8. Sport &amp; Recreation;</li> <li>9. Countryside &amp; Coast;</li> <li>10. Rural Settlements;</li> <li>11. Nature Conservation;</li> <li>12. Environmental Protection; and</li> <li>13. Community Facilities.</li> </ol> <p>The four main development proposals are:</p> <ol style="list-style-type: none"> <li>1. Continued emphasis on employment development;</li> <li>2. The development of a new town centre at Westwood;</li> <li>3. The development of additional housing in the Westwood area; and</li> <li>4. The promotion of mixed-use developments.</li> </ol>	<p>The Plan takes into account national, regional and county planning policies and guidance across the key areas.</p> <p>Key targets of success are:</p> <ul style="list-style-type: none"> <li>• A reduction in unemployment in Thanet to that of the corresponding Kent average, during the Plan Period;</li> <li>• An increase in average wages in Thanet to that of the Kent average by 2011;</li> <li>• An increase in GDP in Thanet to match the Kent average GDP, during the Plan Period; and</li> <li>• A reduction in the percentage of retail expenditure by Thanet residents outside the District to 25% of the gross retail expenditure by 2011.</li> </ul>	<p>Ensure that SPD and DPD support achieving the key targets as well as targets identified in the key themes.</p>	<p>The SA should inform the evolving objectives of the Local Plan / LDF.</p> <p>Key local context.</p>
<p>Thanet District Council Housing Strategy 2006 -10</p>	<p>The Housing Strategy helps realise the effect a fundamental improvement in choice, supply, quality and accessibility of housing available to Thanet people through the following key strategic priorities;</p> <ol style="list-style-type: none"> <li>1. Improving standards and fitness of Private Sector Housing;</li> <li>2. Meeting the demand for affordable housing across the District;</li> <li>3. Promote housing activity in the Renewal Area;</li> <li>4. Improve choice and access to housing for all communities in the District; and</li> <li>5. Tackling homelessness.</li> </ol>	<p>The Strategy emphasis the commitment to other regional and national housing strategies. Detailed performance indicators are provided for the Thanet Strategy in the Annex N.</p>	<p>Ensure that SPD and DPD aligns with housing strategy.</p>	<p>Reflect objectives in the SA Framework.</p>

PPP	Key objectives relevant to DPD and SPD and SA	Key targets and indicators relevant to DPD, SPD and SA	Implications for the DPD and SPD	Implications for SA
Thanet District council Contaminated land strategy	Thanet District Council has produced this document to provide guidance for the identification, inspection, assessment, and remediation of land which may be Designated as Contaminated Land.	Specific targets not set in the strategy acts as guidance only.	Ensure that SPD and DPD is developed using guidance where appropriate.	Ensure that SA supports the guidance.
From Audit to Action – Thanet Crime and Disorder Audit Strategy: 2005 to 2008	Following a review of the annual Crime and Disorder Audit the strategy priorities action for 4 keys themes: <ol style="list-style-type: none"><li>1. Reducing crime;</li><li>2. Felling safe and being safe;</li><li>3. Tackling anti-social behaviour; and</li><li>4. Address substance misuse.</li></ol>	Key targets and objectives are linked to regional and national strategies. Detailed action plans are provided along with a number of specific targets across all 4 key themes.	Ensure that DPD and SPD support the themes and actions of the strategy.	Reflect objectives in the SA Framework.
Thanet District Council Policy on Flood and Coastal Defence	Policy prepared to provide a public statement of the Council's approach to flood and coastal defiance in its areas. Key Objectives inline with government policy: <ol style="list-style-type: none"><li>1. To encourage the provision of adequate and cost effective flood warning systems;</li><li>2. To encourage the provision of adequate, economically, technically and environmentally sounds and sustainable flood and coastal defence measures; and</li><li>3. To discourage inappropriate development in areas at risk from flooding and coastal erosion.</li></ol>	Supports and reviews the Councils ability to deliver the government's policy aims and objectives.	Ensure that DPD and SPD support the objectives on the governmental and local strategy.	Ensure that DPD and SPD support the objectives on the governmental and local strategy.

PPP	Key objectives relevant to DPD and SPD and SA	Key targets and indicators relevant to DPD, SPD and SA	Implications for the DPD and SPD	Implications for SA
'Feet first' enabling and promoting walking in Thanet	<p>The Strategy compliments Kent County Council's "Walking Strategy for Kent" published in 2001 and to add a local dimension. The Strategy has the following key objectives:</p> <ol style="list-style-type: none"> <li>1. To ensure that the appropriate infrastructure is provided and maintained to enable those wishing to walk to do so safely and conveniently;</li> <li>2. To promote and encourage walking as a healthy alternative to the private car for short work and leisure journeys and as a means of recreation; and</li> <li>3. To identify priorities form implementing a planned programme of high quality walking routes in Thanet.</li> </ol>	Strategy supports local transport and county transport plans. Specific targets provided across key themes.	Need to compile with strategy so as to met targets provided.	Ensure that DPD and SPD support the objectives.
Bus Strategy for Thanet	<p>The intention of this strategy is to present a ten year plan which, if achieved, will lead to an improvement in the quality, reliability and perception of bus services in Thanet. The strategy covers the keys themes:</p> <ol style="list-style-type: none"> <li>1. Reliability</li> <li>2. Information</li> <li>3. Accessibility</li> <li>4. Community Transport</li> <li>5. The Rural Perspective</li> <li>6. Inter-Modal Issues</li> <li>7. School Travel</li> <li>8. Company/Green Travel Plans</li> <li>9. Reducing The Need To Travel</li> </ol>	Strategy supports local transport and county transport plans. Specific targets provided across key themes.	Need to compile with strategy so as to met targets provided.	Ensure that DPD and SPD support the objectives.
Corporate Plan 2007-11, Thanet District Council.	<p>This Plan sets clear objectives and ambitions for Thanet Council for the next 10 years. This plan covers 6 key themes:</p> <ol style="list-style-type: none"> <li>1. Thanet's Economy</li> <li>2. Safe Neighbourhoods</li> <li>3. Beautiful Thanet</li> <li>4. Quality Housing</li> <li>5. Healthy Communities</li> <li>6. Modern Council</li> </ol>	This plan identifies why the key themes have been prioritised. Specific actions and a timescale for works are summarized.	Ensure that DPD and SPD support the themes identified in this Plan	Ensure that DPD and SPD support the objectives

PPP	Key objectives relevant to DPD and SPD and SA	Key targets and indicators relevant to DPD, SPD and SA	Implications for the DPD and SPD	Implications for SA
<p>Community Strategy for Thanet.</p>	<p>This document recorded the process and outcomes of the community strategy co-ordinated by the Thanet Local Strategic Partnership. Key Themes:</p> <ul style="list-style-type: none"> <li>• The economy</li> <li>• Lifelong learning</li> <li>• A safer community</li> <li>• The environment and housing</li> <li>• An inclusive community</li> <li>• Health and lifestyle.</li> </ul>	<p>The community was asked what they would like to see in the area. The top five priorities were:</p> <ul style="list-style-type: none"> <li>• A prosperous, thriving economy with job and training opportunities for all who want them.</li> <li>• A safe community where people feel confident and able to take part in community life, social and recreational activities.</li> <li>• Homes for all who need them</li> <li>• Clean, safe streets and quality public spaces in an environment that we can all be proud of.</li> <li>• Opportunities, facilities and activities for young people.</li> </ul> <p>Action plans were developed along these priorities.</p>	<p>Ensure that DPD and SPD support the priorities and action plans identified in the Strategy.</p>	<p>Ensure that DPD and SPD support the priorities and action plans</p>



**Appendix B**  

---

**SA Objectives, Decision  
Making Criteria and  
Indicators**

## B1 SA Objectives, Decision Making Criteria and Indicators

Green = currently included in Thanet AMR

Red = Regional indicator, not included in Thanet AMR

Blue = Suggested indicator (to inform SA)

Objective Number / Thanet District SA Objective	Decision Making Criteria	Indicators
Social		
1. To provide a sustainable supply of housing including an appropriate mix of types and tenures to reflect demand.	Will the plan: <ul style="list-style-type: none"> <li>• Supply an appropriate quantity of housing to satisfy demand?</li> <li>• Supply an appropriate mix of types and tenures of properties in relation to the respective levels of demand?</li> <li>• Supply 30% of new homes as affordable homes?</li> <li>• Reduce the prevalence of unfit and derelict dwellings within the housing stock?</li> </ul>	<ul style="list-style-type: none"> <li>• Net additional dwellings for the current year (10)</li> <li>• Net additional dwellings over previous 5 year period or since the start of the relevant plan period, whichever is longer (9)</li> <li>• Projected net additional dwellings up to the end of the relevant development plan period or over a ten year period, whichever is longer (11)</li> <li>• Annual net dwelling requirement (12)</li> <li>• Annual average number of net additional dwellings needed to meet overall housing requirements, having regard to previous years' performance.</li> <li>• Number of affordable housing completions.</li> <li>• % of new housing sites over 15 units net or 0.5 hectares where provision is made for an element of affordable housing.</li> <li>• Average property price compared to average earnings.</li> <li>• Number of unfit homes per 1000 dwellings.</li> </ul>

Objective Number / Thanet District SA Objective	Decision Making Criteria	Indicators
<p>21. To ensure appropriate development control procedures in place to manage the risks of coastal erosion, coastal and fluvial flood risk, in accordance with PPS25.</p>	<p>Will the plan:</p> <ul style="list-style-type: none"> <li>• Restrict the development of property in areas of flood risk?</li> <li>• Reduce areas available for flood storage?</li> <li>• Ensure adequate measures are in place to manage existing flood risk?</li> <li>• Ensure that development does not increase flood risk due to run-off?</li> <li>• Ensure development is appropriately future proof to accommodate future levels of flood risk?</li> </ul>	<ul style="list-style-type: none"> <li>• Number of planning permissions granted contrary to the advice of the Environment Agency on either flood defence or water quality grounds.</li> <li>• Properties at risk from flooding.</li> <li>• New development with sustainable drainage installed</li> </ul>
<p>2. To maintain appropriate healthcare provision and access to healthcare facilities for all sectors of society.</p>	<p>Will the plan:</p> <ul style="list-style-type: none"> <li>• Ensure people are adequately served by key healthcare facilities, regardless of socio-economic status?</li> </ul>	<ul style="list-style-type: none"> <li>• Death rates from circulatory disease, cancer, accidents and suicide.</li> <li>• Infant mortality rates</li> <li>• Conceptions among girls under 18</li> <li>• Life expectancy</li> <li>• Amount (and %) of new residential development within 30 minutes public transport time of a GP, hospital, primary school, secondary school, areas of employment and major retail centres.</li> <li>• Amount and % of residential property within 30 minutes public transport time of a GP, hospital, primary school, secondary school, areas of employment and major retail centres.</li> </ul>

Objective Number / Thanet District SA Objective	Decision Making Criteria	Indicators
<p>9. To provide access to employment opportunities for all sectors of society ensuring that everyone who wants to work has the opportunity to secure appropriate paid employment.</p> <p>6. To provide appropriate key facilities to support vulnerable people and reduce the level of deprivation identified across the wards.</p>	<p>Will the plan:</p> <ul style="list-style-type: none"> <li>• Encourage and enable people who want to work to work.</li> <li>• Reduce levels of unemployment?</li> <li>• Reduce the proportion of people living in deprived areas.</li> <li>• Ensure new residential development is within a reasonable travel distance from key facilities.</li> <li>• Ensure existing residences are adequately served by key facilities.</li> <li>• Ensure vulnerable people within the community are adequately served by key facilities.</li> </ul>	<ul style="list-style-type: none"> <li>• Proportion of children under 16 who live in low-income households.</li> <li>• % of population of working age who are claiming key benefits</li> <li>• Percentage of households in fuel poverty.</li> <li>• Proportion of population who live in areas that rank within the most deprived 20% of areas in the country.</li> <li>• Household income in rural areas.</li> <li>• Proportion of people of working age in employment</li> <li>• Proportion of people claiming unemployment benefits who have been out of work for more than a year</li> <li>• Amount (and %) of new residential development within 30 minutes public transport time of a GP, hospital, primary school, secondary school, areas of employment and major retail centres.</li> <li>• Amount and % of residential property within 30 minutes public transport time of a GP, hospital, primary school, secondary school, areas of employment and major retail centres.</li> <li>• Access to key facilities by lower socio economic groups.</li> </ul>
<p>3. To provide access to appropriate educational facilities for all sectors of society including focus on training vulnerable and welfare dependant workers with skills necessary to ensure year round employment.</p>	<p>Will the plan:</p> <ul style="list-style-type: none"> <li>• Improve educational levels of the population of working age?</li> <li>• Improve access to educational facilities for vulnerable and welfare dependant workers?</li> </ul>	<ul style="list-style-type: none"> <li>• Proportion of 19 year olds with level 2 qualifications (5 GCSEs, A *-C or NVQ equivalent)</li> <li>• % of population of working age qualified to NVQ level 3 or equivalent.</li> <li>• Proportion of adults with poor literacy and numeracy skills.</li> <li>• Access to education facilities.</li> </ul>
<p>4. To increase public safety and reduce crime and fear of crime.</p>	<p>Will the plan:</p> <ul style="list-style-type: none"> <li>• Reduce levels of burglaries, violent offences and vehicle crime?</li> <li>• Reduce public perceptions and fear of crime?</li> </ul>	<ul style="list-style-type: none"> <li>• Levels of domestic burglaries, violent offences and vehicle crimes.</li> <li>• Fear of crime.</li> </ul>

Objective Number / Thanet District SA Objective	Decision Making Criteria	Indicators
<p>5. To provide a sustainable public transport network that allows access to key facilities, services and employment opportunities without reliance on private vehicles.</p>	<ul style="list-style-type: none"> <li>• Will the plan:</li> <li>• Improve public transport links to key facilities for existing development?</li> <li>• Ensure new development is appropriately serviced by public transport to enable access to key facilities?</li> </ul>	<ul style="list-style-type: none"> <li>• Amount (and %) of new residential development within 30 minutes public transport time of a GP, hospital, primary school, secondary school, areas of employment and major retail centres.</li> <li>• Amount and % of residential property within 30 minutes public transport time of a GP, hospital, primary school, secondary school, areas of employment and major retail centres.</li> </ul>
<p>8. To create vibrant balanced communities where residents feel a 'sense of place' and individual contribution is valued.</p>	<p>Will the plan:</p> <ul style="list-style-type: none"> <li>• Result in communities where residents are satisfied with their local area as a place to live?</li> <li>• Result in harmonious and mixed communities?</li> </ul>	<ul style="list-style-type: none"> <li>• % of people who say they are satisfied with their local area as a place to live.</li> <li>• % of people who feel that their local area is a place where people from different backgrounds and communities can live together harmoniously.</li> </ul>
<b>Economic</b>		
<p>9. To provide access to employment opportunities for all sectors of society ensuring that everyone who wants to work has the opportunity to secure appropriate paid employment.</p>	<p>Will the plan:</p> <ul style="list-style-type: none"> <li>• Increase levels of employment in the population of working age?</li> <li>• Reduce the proportion of people on unemployment benefits?</li> </ul>	<ul style="list-style-type: none"> <li>• Proportion of people of working age in employment</li> <li>• Proportion of people claiming unemployment benefits who have been out of work for more than a year</li> <li>• % increase or decrease in the total number of VAT registered businesses in the area</li> <li>• Percentage change in workplace-based employment</li> </ul>

Objective Number / Thanet District SA Objective	Decision Making Criteria	Indicators
<p>10. To ensure the sustainable development of the proposed economic growth and encourage industrial and employment development at key sites within the District to support priority regeneration areas .</p>	<p>Will the plan:</p> <ul style="list-style-type: none"> <li>• Increase the GVA per capita of the district's population?</li> <li>• Encourage sustainable development of key sites across the district likely to stimulate economic growth?</li> <li>• Encourage sustainable development of key services and facilities across the district likely to stimulate economic growth? Deliver industrial and employment development in regeneration areas?</li> <li>• Deliver industrial and employment development that reduces unemployment in deprived areas?</li> </ul>	<ul style="list-style-type: none"> <li>• <b>GVA per capita</b></li> <li>• <b>Development of key sites to stimulate economic growth across the district.</b></li> <li>• <b>Development of key services and facilities to stimulate economic growth across the district. Development of key sites to stimulate economic growth in priority regeneration areas</b></li> <li>• <b>Proportion of people, in the most deprived areas, of working age in employment</b></li> <li>• <b>Proportion of people, in the most deprived areas, claiming unemployment benefit who have been out of work for more than a year</b></li> <li>• <b>Proportion of young people (18-24 year olds), in the most deprived areas, in full-time education or employment</b></li> <li>• <b>Percentage increase or decrease in work-place based employment in the most deprived areas</b></li> </ul>
<p>11. To protect and enhance the areas natural, semi-natural and street scene to support the tourist economy.</p>	<ul style="list-style-type: none"> <li>• Will the plan</li> <li>• Encourage development that will boost the tourism sector?</li> <li>• Protect and enhance natural, semi-natural and built assets that support the tourist economy?</li> </ul>	<ul style="list-style-type: none"> <li>• <b>Percentage of jobs in the tourism sector</b></li> <li>• <b>Number of visitors staying overnight and overnight spend</b></li> <li>• <b>How to measure the protection of assets that support the tourist economy?</b></li> </ul>
<p>17. To provide a sustainable public transport network that allows access to key facilities, services and employment opportunities without reliance on private vehicles.</p> <p>18. To develop key sustainable transport links between Thanet and the wider Kent region and beyond, including road, rail and air.</p>	<ul style="list-style-type: none"> <li>• Will the plan</li> <li>• Improve transport links to key facilities within the district?</li> <li>• Reduce reliance on private vehicles</li> <li>• Support the development of key transport links between Thanet and the wider south East?</li> </ul>	<ul style="list-style-type: none"> <li>• <b>Amount (and %) of new residential development within 30 minutes public transport time of a GP, hospital, primary school, secondary school, areas of employment and major retail centres.</b></li> <li>• <b>Average daily motor vehicle flows.</b></li> <li>• <b>Proportion of travel by mode.</b></li> <li>• <b>How to assess transport links across the wider south east?</b></li> </ul>

Objective Number / Thanet District SA Objective	Decision Making Criteria	Indicators
<b>Environmental</b>		
<p>12. To improve efficiency in land use through the re-use of previously developed land and existing buildings, including reuse of materials from buildings, and encourage urban renaissance.</p>	<p>Will the plan:</p> <ul style="list-style-type: none"> <li>• Encourage locating development on previously developed land, avoiding Greenfield sites?</li> <li>• Encourage an appropriate density and mix of development that reflects the needs of the population?</li> <li>• Encourage the redevelopment of derelict land and properties, returning them to appropriate uses?</li> </ul>	<ul style="list-style-type: none"> <li>• % of new and converted dwellings completed on previously developed land.</li> <li>• Development on previously developed land.</li> <li>• % of new dwellings completed at (i) less than 30 dwellings per hectare (ii) between 30 and 50 dwellings per hectare (iii) above 50 dwellings per hectare.</li> <li>• Net densities achieved on completed housing sites over 10 units.</li> <li>• Empty properties brought back into use.</li> <li>• Derelict land brought back into reuse</li> <li>• Number of hectares of open countryside lost to irreversible development.</li> <li>• Number of departures from policy safe guarding green wedges.</li> <li>• Number of hectares of best and most versatile agricultural land lost to irreversible development during plan period.</li> </ul>
<p>16. To improve air quality in the District's Air Quality Management Areas.</p>	<p>Will the plan:</p> <ul style="list-style-type: none"> <li>• Encourage improvement in air quality within Air Quality Management Areas (AQMAs)?</li> </ul>	<ul style="list-style-type: none"> <li>• Days when air pollution is moderate or high</li> </ul>

Objective Number / Thanet District SA Objective	Decision Making Criteria	Indicators
<p>17. To provide a sustainable public transport network that allows access to key facilities, services and employment opportunities without reliance on private vehicles. (also included as social and economic objective)</p> <p>20. To ensure development within the District responds to the challenges associated with climate change.</p> <p>13. To ensure that a sustainable pattern of development is pursued.</p>	<ul style="list-style-type: none"> <li>• Will the plan:</li> <li>• Promote a proactive reduction in the volume of greenhouse gas emissions released by development across the District?</li> <li>• Promote a sustainable public transport network that reduces reliance on private vehicles?</li> <li>• Promote development in sustainable locations that limits the need to travel to key facilities and services?</li> </ul>	<ul style="list-style-type: none"> <li>• Emissions of greenhouse gases from energy consumption, transport and land use and waste management.</li> <li>• Amount (and %) of new residential development within 30 minutes public transport time of a GP, hospital, primary school, secondary school, areas of employment and major retail centres.</li> <li>• Average daily motor vehicle flows.</li> <li>• Proportion of travel by mode.</li> </ul>
<p>22. To conserve and enhance biodiversity.</p>	<p>Will the plan:</p> <ul style="list-style-type: none"> <li>• Provide opportunities to develop or enhance new and existing wildlife and geological sites?</li> <li>• Avoid destruction of important habitats or unique geological features?</li> <li>• Avoid damage to designated wildlife and geological sites, protected species and their habitats?</li> <li>• Support key objectives of the biodiversity action plan (BAP)?</li> </ul>	<ul style="list-style-type: none"> <li>• Population of wild birds.</li> <li>• Condition of Sites of Special Scientific Interest (SSSIs).</li> <li>• Extent and condition of key habitats for which Biodiversity Action Plans have been established.</li> <li>• Extent of ancient woodlands</li> <li>• Achievement on BAP targets</li> <li>• Loss of BAP or protected habitat as a result of new development.</li> </ul>

Objective Number / Thanet District SA Objective	Decision Making Criteria	Indicators
<p>14. To conserve and enhance the character and quality of the area's landscape and townscape particularly associated with town centres and coastal areas.</p> <p>15. To preserve and enhance sites, features and areas of historic archaeological or architectural importance, and their settings.</p>	<p>Will the plan:</p> <ul style="list-style-type: none"> <li>• Improve landscape quality and the character of open spaces and the public realm?</li> <li>• Protect and/or enhance the character and appearance of the District's townscape and countryside?</li> <li>• Preserve or enhance the character and appearance of conservation areas, listed buildings, scheduled monuments and other features of cultural, historical or archaeological value and their setting?</li> <li>• Ensure that development is sensitive towards the local environment?</li> <li>• Support the restoration and re-use of existing buildings?</li> </ul>	<ul style="list-style-type: none"> <li>• Land covered by management schemes</li> <li>• Access to and the use of the countryside</li> <li>• Buildings of Grade I and II* at risk of decay</li> <li>• Empty properties brought back into use.</li> <li>• Derelict land brought back into reuse</li> </ul>
<p>24. To reduce the global, social and environmental impact of consumption of resources by using sustainably produced and local products.</p>	<p>Will the plan:</p> <ul style="list-style-type: none"> <li>• Promote sustainability principles in the design, procurement, and operation of development?</li> <li>• Encourage developers and operators in the District to 'green' their business operations and supply chains?</li> <li>• Reduce the consumption rates of raw materials through strong sustainability policies?</li> </ul>	<ul style="list-style-type: none"> <li>• Percentage of new build and retrofit homes meeting EcoHomes Very Good standard</li> <li>• Percentage of commercial buildings meeting BREEAM Very Good standard</li> <li>• Ecological footprint for the District</li> </ul>

Objective Number / Thanet District SA Objective	Decision Making Criteria	Indicators
<p>19. To reduce waste generation and disposal and achieve the sustainable management of waste</p> <p>7. To support campaigns to inform to educate and to work towards changing behaviours of residents, consumers and the wider community with regard to the reduction and recycling of waste</p>	<p>Will the plan:</p> <ul style="list-style-type: none"> <li>• Promote adherence to movement up the waste hierarchy?</li> <li>• Promote reduced household waste generation rates?</li> <li>• Promote increased waste recovery and recycling?</li> </ul>	<ul style="list-style-type: none"> <li>• Percentage of the total tonnage of all types of waste (municipal solid waste, construction and demolition and industrial) that has been recycled, composted, used to recover heat, power and other energy sources, and landfilled.</li> </ul>
<p>23. To protect and improve the quality of fluvial and coastal water resources, including European designated sites</p>	<p>Will the plan:</p> <ul style="list-style-type: none"> <li>• Encourage Compliance with WFD?</li> <li>• Encourage compliance with the EC Bathing Waters Directive?</li> <li>• Promote management practices that will protect water features from pollution?</li> </ul>	<ul style="list-style-type: none"> <li>• Rivers of Good or Fair chemical and biological water quality / Compliance with Water Framework Directive</li> <li>• Compliance with EC Bathing Waters Directive</li> <li>• Incidents of major and significant water pollution</li> </ul>
<p>25. To increase energy efficiency and the proportion of energy generated from renewable sources in the area.</p>	<p>Will the plan:</p> <ul style="list-style-type: none"> <li>• Encourage reduction in energy use and increased energy efficiency?</li> <li>• Encourage the development of renewable energy facilities within the District?</li> </ul>	<ul style="list-style-type: none"> <li>• Energy use per capita</li> <li>• Installed capacity for energy production from renewable sources</li> </ul>

## **Appendix C**

---

### **SA Matrices**

## C1 Matrix 1: Testing Objectives Against Plan Objectives

Plan: Core Strategy Issues and Options

Date:

SA Objective		Possible Effects (Please tick)				Explanation	Mitigation and Enhancement
		Positive	Negative	Neutral	?		
1							
2							
3							
4							
5							
6							
7							
8							
9							
10							
11							
12							
13							
14							
15							
16							
17							
18							
19							
20							
21							
<b>Count of Effects</b>							
<b>Summary of Appraisal (conclusions and recommendations)</b>							





## C4 SA Objectives, Decision Making Criteria and Indicators

Plan:

Date:

SA Objective	Long Term Effects							Occurrence of Effect (No)						Qualitative Long Term Synergistic or Cumulative Impacts <i>(Consider nature and significance of different policies/issues/timeframes)</i>	Conclusion and Mitigation	
	P1	P2	P3	P4	P5			++	+	0	-	--	?			
<b>Summary of All Policies</b>																

**Appendix D**  
**Baseline Data**

---

## **D1 Thanet Designated Areas**

### **Ramsar Sites**

- Thanet Coast and Sandwich Bay

### **Special Protected Areas**

- Thanet Coast and Sandwich Bay

### **Special Areas of Conservation**

- Sandwich bay
- Thanet Coast

### **Sites of Special Scientific Interest**

- Thanet Coast
- Sandwich bay to Hacklinge Marshes

### **Regionally Important Geomorphological/Geological Sites**

- Monkton Chalkpit Nature Reserve
- St Peter Quarry
- Pegwell Bay infilled dry valley

### **Registered Parks and Gardens**

- Albion Place Gardens

### **Scheduled Monuments**

- Anglo-Saxon cemeteries of Ozengall Grange
- Enclosure and ring ditches 200yds east north east of Minster Laundry
- Quex Park Settlements
- Anglo-Saxon cemetery and associated remains at Monkton, 550m north of Walters Hall Farm
- Double ring ditch and two enclosures 400yds north west of Danes Court
- Settlement one mile east of village
- Monastic Grange and pre-conquest nunnery at Minster Abbey
- Dent-De-lion Medieval Gatehouse
- Group of ring ditches 400yds north west of Great Brooks End Farm
- Salmestone Grange
- Anglo-Saxon cemetery, Parish Church of St Giles and associated remains immediately east of Sarre Mill
- Monastic Grange and pre conquest Nunnery at Minster Abbey
- Anglo-Saxon cemetery, Dane Valley Road

- Ring ditches and enclosure 500yds east south east of College Farm

### **Conservation Areas**

- Acol
- Birchington
- Broadstairs
- Kingsgate
- Margate
- Margate Seafront
- Minster
- Monkton
- Northdown
- Pegwell
- Ramsgate
- Ramsgate, Royal Esplanade
- Ramsgate Montefiore
- Reading Street
- St Nicholas at Wade
- St Peters
- Sarre
- Westgate on Sea
- Westgate on Sea East
- Westgate on Sea South

### **Landscape Character Areas**

- Pegwell Bay
- The Former Wantsum Channel
- The Former Wantsum North Shore
- The Central Chalk Plateau
- Quex Park
- The Urban Coast